



Nebraska Judicial Branch  
Annual Caseload Report

# **Separate Juvenile Courts**

**Fiscal Year 2017**

July 1, 2016 to

June 30, 2017



# Nebraska Separate Juvenile Courts Annual Caseload Report

Fiscal Year 2016 — July 1, 2016 to June 30, 2017

This Annual Separate Juvenile Court Caseload Report contains caseload statistics for Nebraska's three Separate Juvenile Courts. Statistics are compiled through extracts from the JUSTICE automated trial court case management system. Providing court statistics ensures transparency to the public and assists administration in ensuring efficient court practices.

Caseload data is now produced with a new, more reliable reporting software tool. Prior to FY 2016, caseload data was extracted and aggregated monthly through a programmed process. The 10 year history section of this Caseload Report should not be compared to reports prior to FY 2016.

Caseload statistics demonstrate the volume of cases in each jurisdiction and the changes that occur over time. Data are useful in determining staffing levels and for predicting the effect on caseloads due to changes in the law.

Reports are available for all levels of state appellate and trial courts at [www.supremecourt.ne.gov](http://www.supremecourt.ne.gov) > Administration > Publications and Reports.

## **Mission of the Nebraska Administrative Office of the Courts:**

Under the direction of the Nebraska Supreme Court, the Administrative Office of the Courts' mission is to ensure the public has equal access to justice, using leadership, education, technology, and administrative services to implement consistent, efficient, and effective court practices.



**Corey R. Steel | Nebraska State Court Administrator**  
**Nebraska Supreme Court**

Rm. 1213 State Capitol | P.O. Box 98910 | Lincoln, NE 68509  
T 402.471.3730 | F 402.471.2197  
[www.supremecourt.ne.gov](http://www.supremecourt.ne.gov)

**Judges**

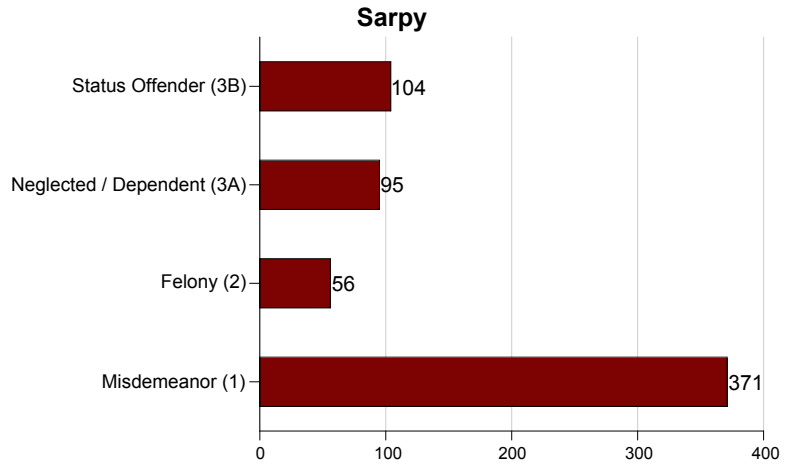
Honorable Lawrence Gendler

Honorable Robert O'Neal

**Sarpy County Separate Juvenile Court FY 2017**

Misdemeanor (1)	371
Felony (2)	56
Neglected / Dependent (3A)	95
Status Offender (3B)	104
<b>Total Cases</b>	<b>626</b>

Sarpy County had 180 Juvenile 3A cases opened which involved 348 children.



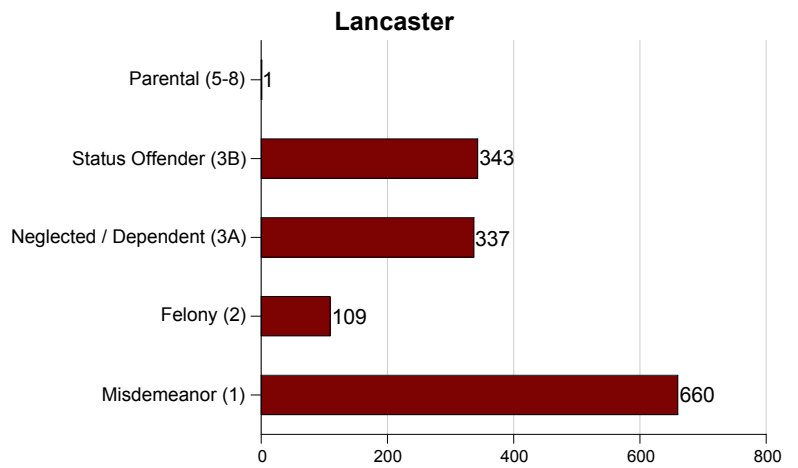
**Judges**

*Honorable Linda Porter*  
*Honorable Reggie Ryder*  
*Honorable Roger Heideman*  
*Honorable Thomas Dawson*  
*Honorable Toni Thorson*

**Lancaster County Separate Juvenile Court  
FY 2017**

Misdemeanor (1)	660
Felony (2)	109
Neglected / Dependent (3A)	337
Status Offender (3B)	343
Parental (5-8)	1
<b>Total Cases</b>	<b>1,450</b>

Lancaster County had 484 Juvenile 3A cases opened which involved 928 children.



**Judges**

*Honorable Christopher Kelly*

*Honorable Douglas Johnson*

*Honorable Elizabeth  
Crnkovich*

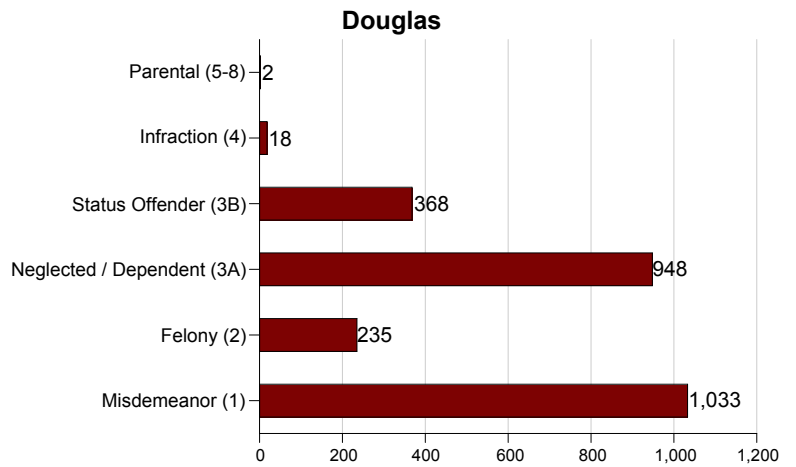
*Honorable Vernon Daniels*

*Honorable Wadie Thomas Jr.*

**Douglas County Separate Juvenile Court FY 2017**

Misdemeanor (1)	1,033
Felony (2)	235
Neglected / Dependent (3A)	948
Status Offender (3B)	368
Infraction (4)	18
Parental (5-8)	2
<b>Total Cases</b>	<b>2,604</b>

Douglas County had 970 Juvenile 3A cases opened which involved 1892 children.



**Separate Juvenile Courts Cases Opened - 10 Year History**

	2008	2009	2010	2011	2012	2013	2014	2015	2016	2017
Sarpy	931	865	855	861	692	684	653	642	624	626
Lancaster	2,298	2,163	2,078	2,190	2,013	1,924	1,797	1,694	1,623	1,450
Douglas	2,025	2,530	3,109	2,611	2,716	2,705	2,540	2,374	2,366	2,604
Summary	<b>5,254</b>	<b>5,558</b>	<b>6,042</b>	<b>5,662</b>	<b>5,421</b>	<b>5,313</b>	<b>4,990</b>	<b>4,710</b>	<b>4,613</b>	<b>4,680</b>

Case counts include Supplemental Petitions filed in Separate Juvenile Court.