



Case Progression and Court Improvement Data 2008



University of Nebraska-Lincoln Center on Children, Families, and the Law

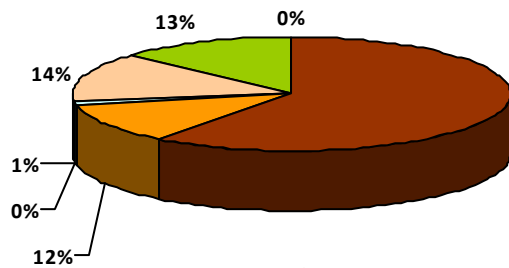
District 10 Team Adams – Adams & Fillmore Counties

Information provided in this document is designed to help your team improve case progression, as this is one area the courts can control. Timeliness of hearings has a significant impact on time to case closure, which means that courts can make a difference in the lives of children in the system. Data on page 1 comes from Fostering Court Improvement (fosteringcourtimprovement.org/ne) and data on pages 2-4 was collected through JUSTICE to track case progression timelines for all abuse/neglect cases that closed in 2008.

This is down from 17 months in 2006

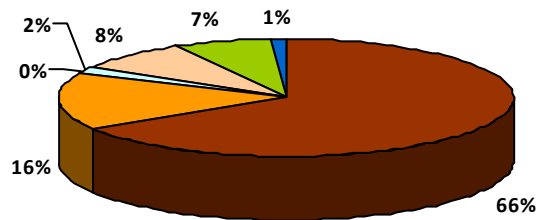
	District 10, TA (2008)	Nebraska (2008)	Missouri (2008)	National (2003-2006)
Median days from report to removal	13.5	20	19	Not Available
Median length of stay	13 months	13 months	13 months	12 months
Median months to reunification	7 months	7 months	7 months	7 months
Median months to adoption	33 months	34 months	24 months	32 months

Type of discharge



- Reunification
- Adoption
- Relative
- Transfer
- Emancipation
- Guardianship
- Other

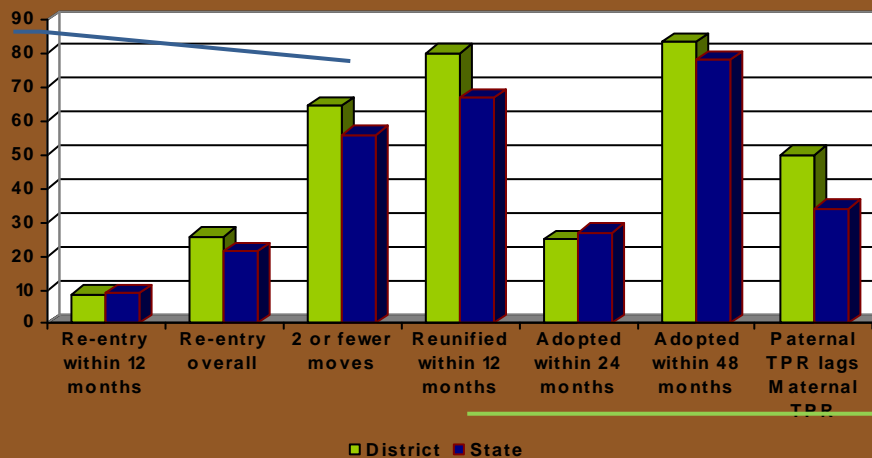
District 10 Team Adams



Nebraska

Percentages for 2008 Fiscal Year

The number of children with 2 or fewer moves has increased from 53% in 2006 to 62% in 2008.

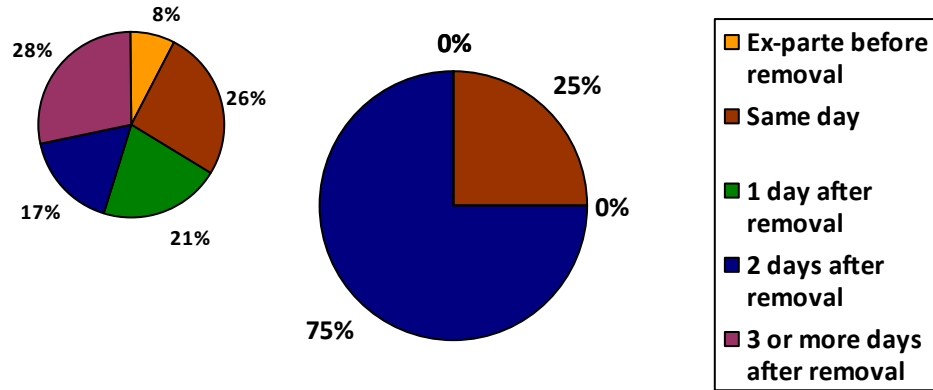


Reunification within 12 months is up from 65% in 2006 to 80% in 2008.

Timeline progression: All ages

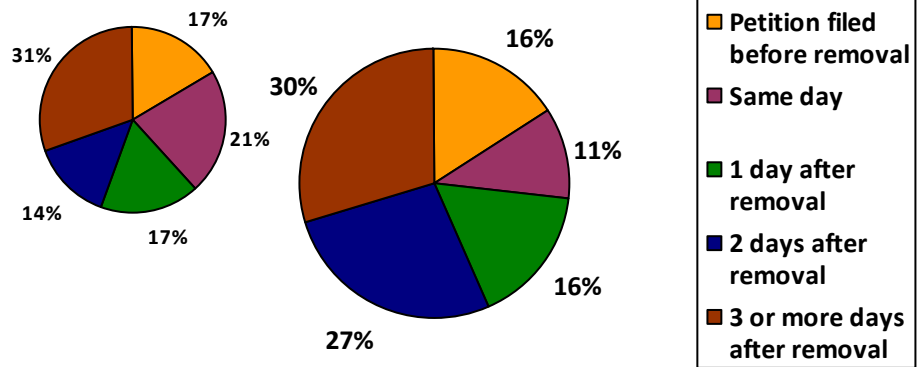
Removal to ex-parte

Nebraska (Median = 1 day) District 10, Team Adams (Median = 2 days)



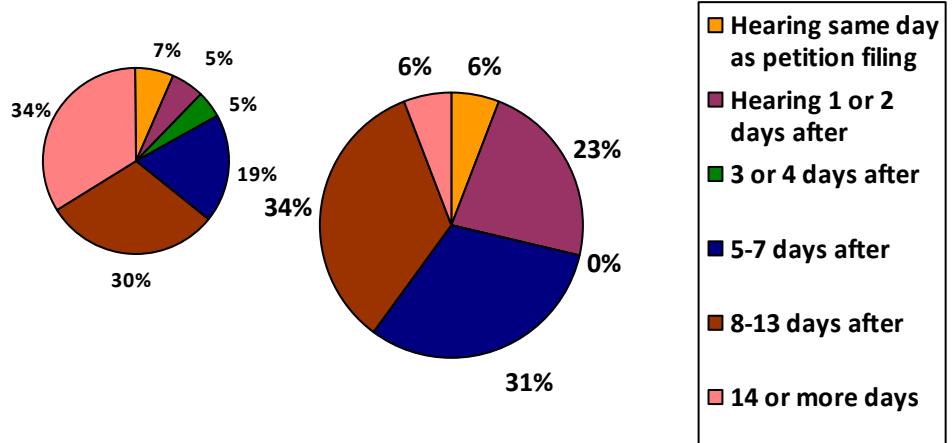
Removal to Petition Filing

Nebraska (Median = 1 day) District 10, Team Adams (Median = 2 days)



Petition to First Hearing

Nebraska (Median = 9 days) District 10, Team Adams (Median = 7 days)

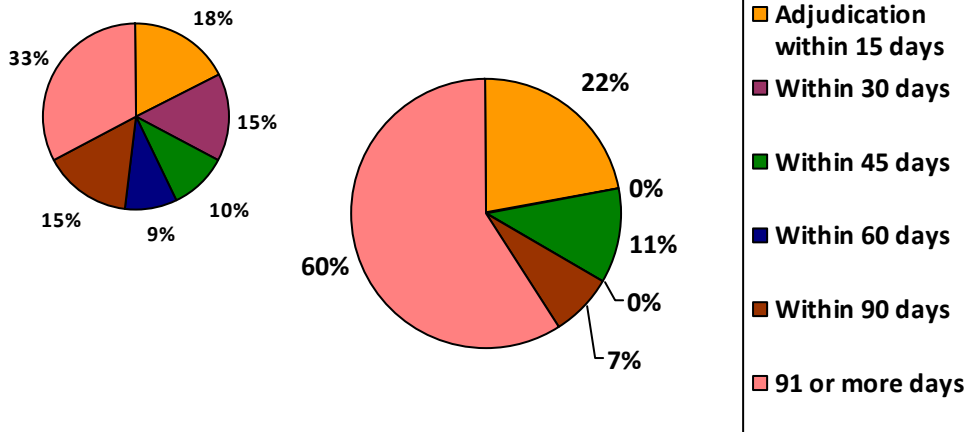


* Note: All data presented uses initial removal date to court closure date and may not match HHS reports

ed between January 1 and December 31, 2008.
 se/neglect cases. This data uses only those cases.*

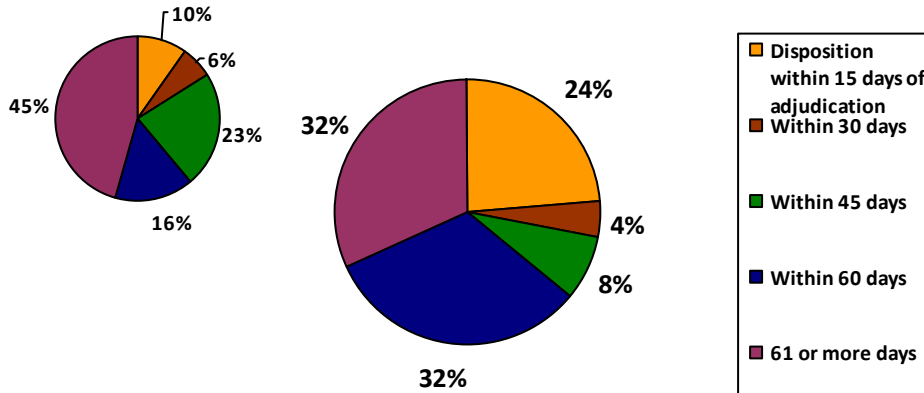
Removal to Adjudication

Nebraska (Median = 57 days) District 10, Team Adams (Median = 108 days)
 NOTE: Median is almost 2x the state average



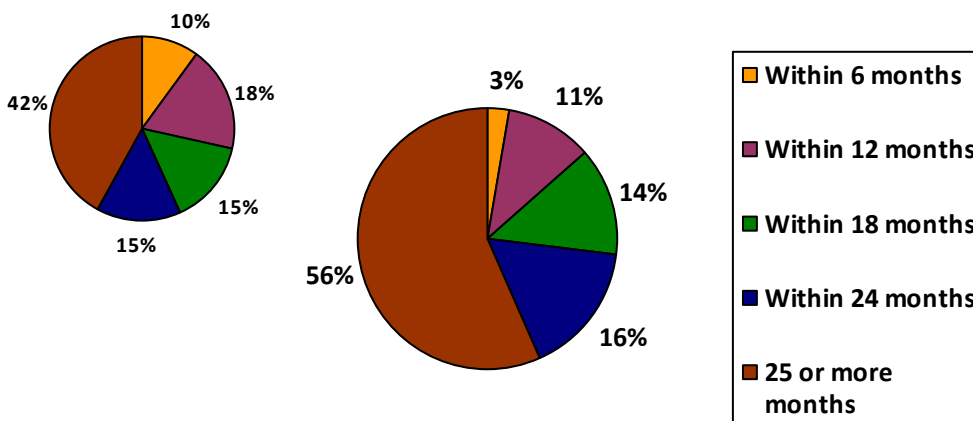
Adjudication to Disposition

Nebraska (Median = 56 days) District 10, Team Adams (Median = 49 days)



Removal to permanency

Nebraska (Median = 23 mo) District 10, Team Adams (Median = 25 mo)



Best practice recommendations

Removal to first hearing – 3 days

29% of 2008 District 10 cases held the first hearing within 3 days of removal

Removal to adjudication – 60 days

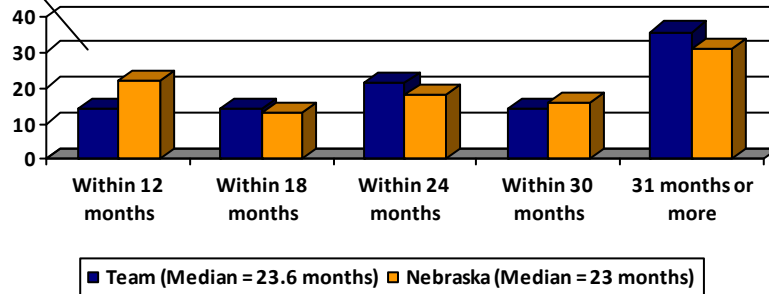
33% of 2008 District 10 cases adjudicated within 60 days.

Adjudication to disposition – 30 days

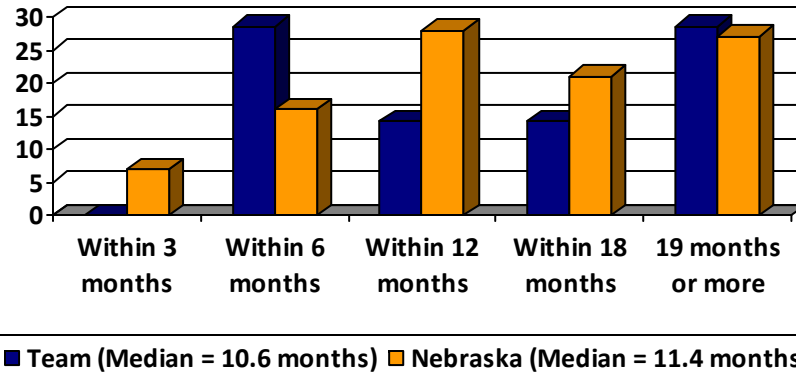
28% of 2008 District 10 cases held a disposition within 30 days of adjudication

In other words, 22% of TPRs happen within 12 months statewide, compared to 12% in District 10 Team Adams.

Percentages for time in months from removal to TPR



Percentages for time in months from TPR to adoption



Analysis of the case progression data for all Nebraska judges shows that judges who have more timely adjudications of their cases are also able to close their cases in a more timely fashion. Specifically, those judges who have a median time to adjudications in less than 30 days from removal, have a median time to case closure of 15.5 months. Those judges who have a median time to adjudication of 31-60 days, have a median time to case closure of 17.2 months. Judges with a median time to adjudication of 61-90 days have a median time to case closure of 18.4 months. Finally, judges who have a median time to adjudication of 91 or more days have a median time to case closure of 34.3 months.

Timeline	District	NE
Early Stages		
Removal to ex-parte	Not reported	1 day
Removal to 3a petition	1 day	1 day
3a petition to first appearance	8 days	9 days
Removal to adjudication	215 days	62 days
Permanency Stages		
Adjudication to disposition	49 days	58 days
Removal to permanency	25 months	21 months
TPR Stages		
Removal to TPR	24 months	23 months
TPR to adoption	11 months	9 months

Case progression for Children ages 0-3