



Case Progression and Court Improvement Data 2008



District 12 Team 1 – Box Butte, Dawes, Sioux, Grant & Sheridan Counties

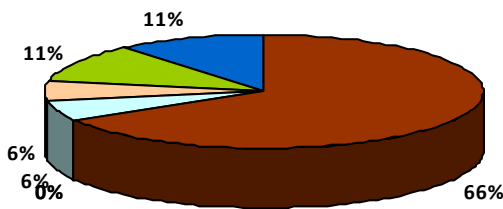
University of Nebraska-Lincoln Center on Children, Families, and the Law

Information provided in this document is designed to help your team improve case progression, as this is one area the courts can control. Timeliness of hearings has a significant impact on time to case closure, which means that courts can make a difference in the lives of children in the system. Data on page 1 comes from Fostering Court Improvement (fosteringcourtimprovement.org/ne) and data on pages 2-4 was collected through JUSTICE to track case progression timelines for all abuse/neglect cases that closed in 2008.

This is increased from 62 days in 2006

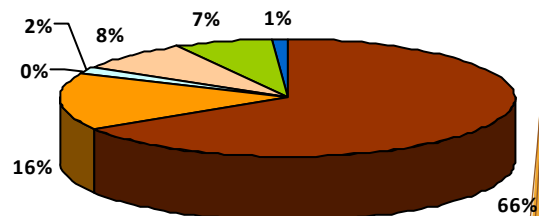
	District 12 T1 (2008)	Nebraska (2008)	Missouri (2008)	National (2003-2006)
Median days from report to removal	79 days	20	19	Not Available
Median length of stay	5 months	13 months	13 months	12 months
Median months to reunification	2 months	7 months	7 months	7 months
Median months to adoption	N/A	34 months	24 months	32 months

Type of discharge



District 12 Team 1

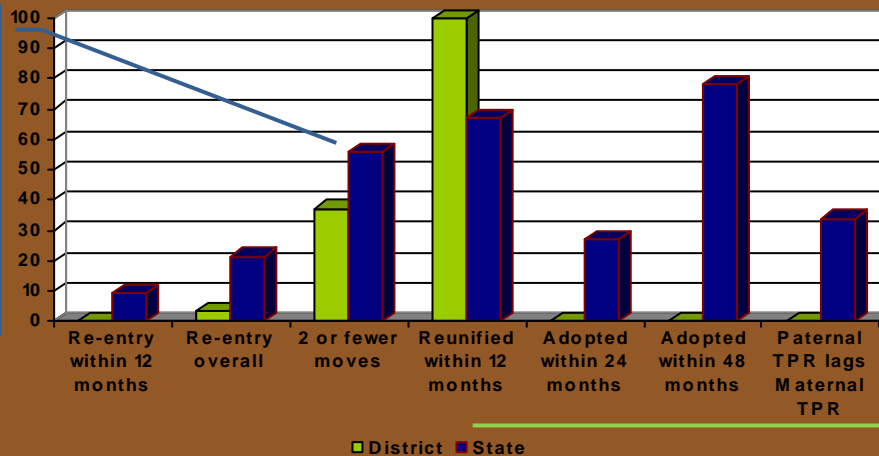
- Reunification
- Adoption
- Relative
- Transfer
- Emancipation
- Guardianship
- Other



Nebraska

Percentages for 2008 Fiscal Year

The percent of children with two or fewer moves is down from 50.3% in 2006 to 37% in 2008.

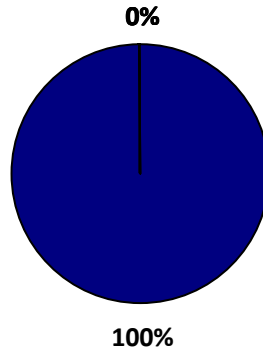
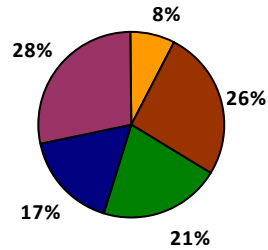


The percent of children reunified within 12 months has increased from 83.3% in 2006 to 100% in 2008.

Timeline progression: All ages Removal to ex-parte

Nebraska (Median = 1 day)

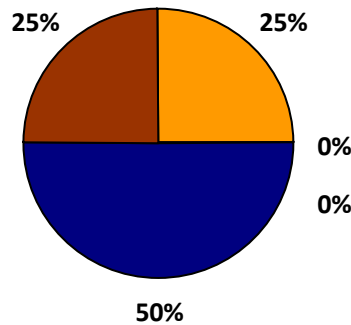
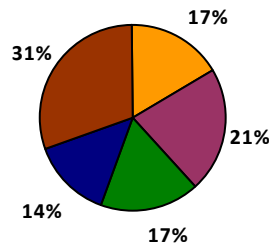
District 12, Team 1 (Median = 2 days)



Removal to Petition Filing

Nebraska (Median = 1 day)

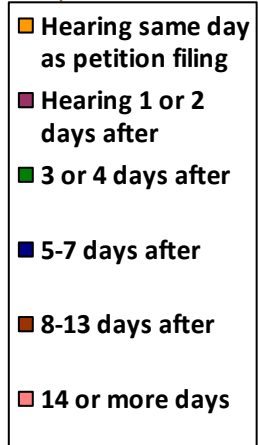
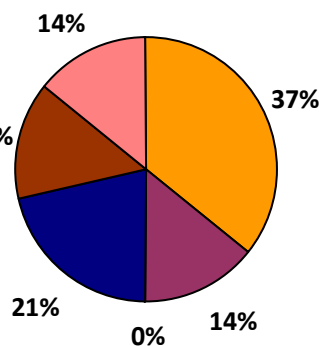
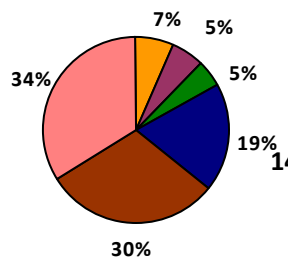
District 12, Team 1 (Median = 2 days)



Petition to First Hearing

Nebraska (Median = 9 days)

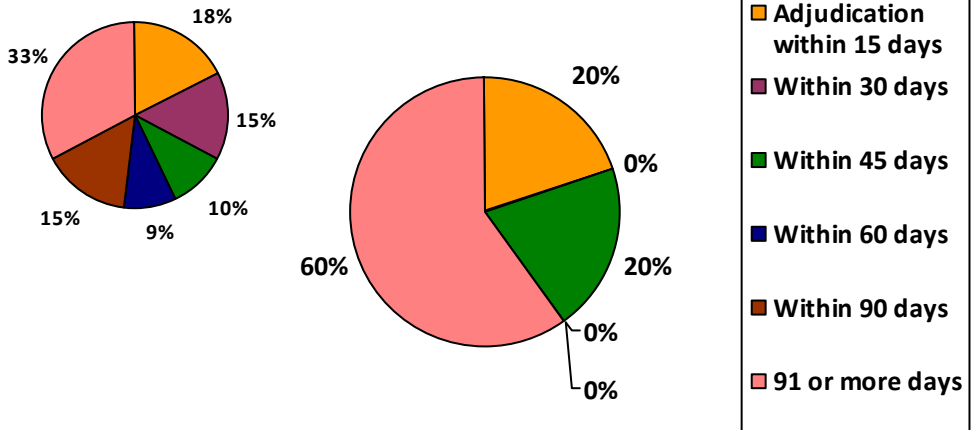
District 12, Team 1 (Median = 1 day)



* Note: All data presented uses initial removal date to court closure date and may not match HHS reports

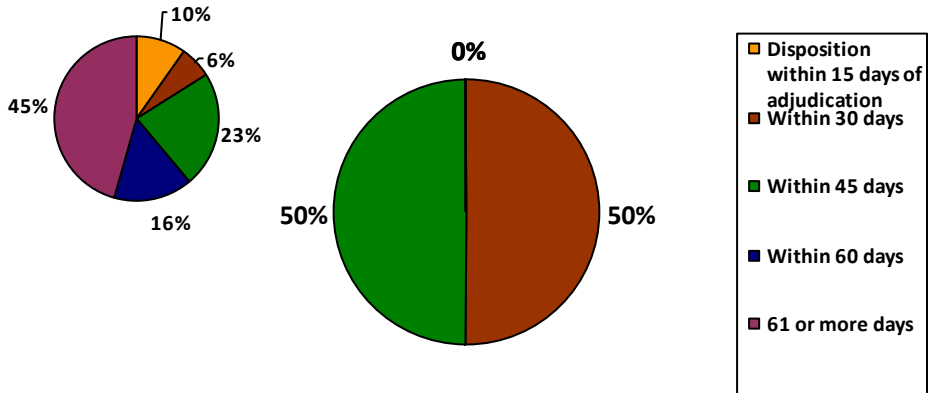
Removal to Adjudication

Nebraska (Median = 57 days) District 12, Team 1 (Median = 208 days)



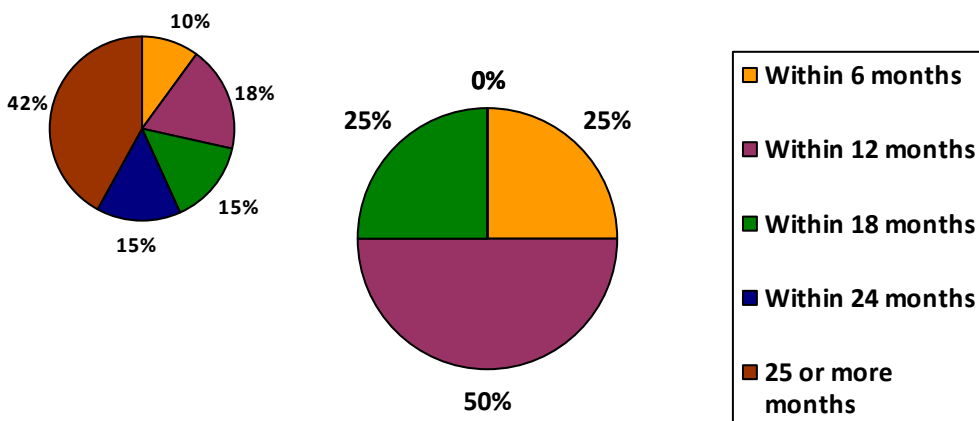
Adjudication to Disposition

Nebraska (Median = 56 days) District 12, Team 1 (Median = 32 days)



Removal to permanency

Nebraska (Median = 23 mo) District 12, Team 1 (Median = 7 mo)



Best practice recommendations

Removal to first hearing – 3 days

57% of 2008 District 12 cases held the first hearing within 3 days of removal

Removal to adjudication – 60 days

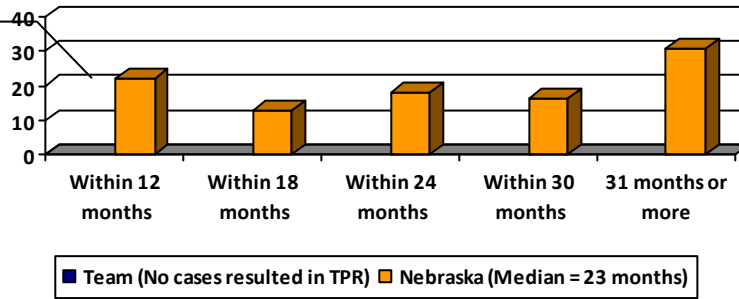
40% of 2008 District 12 cases adjudicated within 60 days.

Adjudication to disposition – 30 days

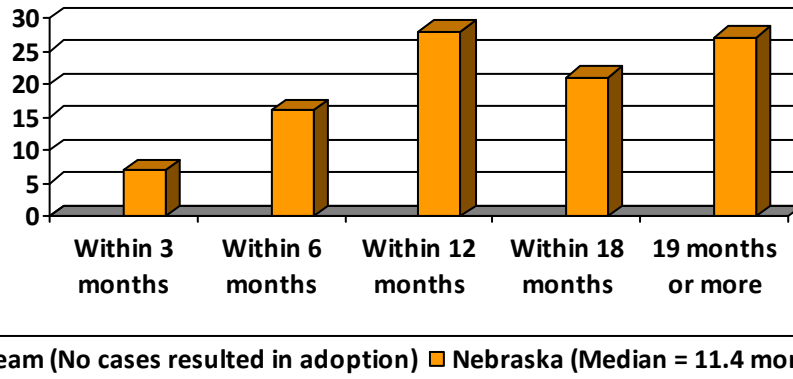
50% of 2008 District 12 cases held a disposition within 30 days of adjudication

There were no TPR cases in 2008.

Percentages for time in months from removal to TPR



Percentages for time in months from TPR to adoption



Analysis of the case progression data for all Nebraska judges shows that judges who have more timely adjudications of their cases are also able to close their cases in a more timely fashion. Specifically, those judges who have a median time to adjudications in less than 30 days from removal, have a median time to case closure of 15.5 months. Those judges who have a median time to adjudication of 31-60 days, have a median time to case closure of 17.2 months. Judges with a median time to adjudication of 61-90 days have a median time to case closure of 18.4 months. Finally, judges who have a median time to adjudication of 91 or more days have a median time to case closure of 34.3 months.

Timeline	District	NE
Early Stages		
Removal to ex-parte	Not reported	1 day
Removal to 3a petition	3 days	1 day
3a petition to first appearance	1 day	9 days
Removal to adjudication	No data	62 days
Permanency Stages		
Adjudication to disposition	No data	58 days
Removal to permanency	8 months	21 months
TPR Stages		
Removal to TPR	No cases in 2008	23 months
TPR to adoption		9 months

Case progression for Children ages 0-3