



Case Progression and Court Improvement Data 2008



District 12 Team 2 – Cheyenne, Deuel, Garden, Banner & Kimball Counties

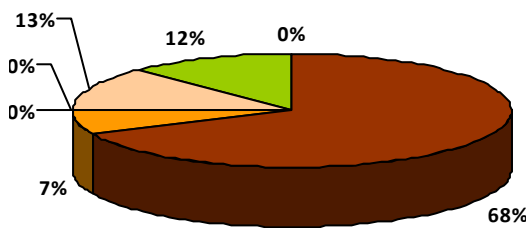
University of Nebraska-Lincoln Center on Children, Families, and the Law

Information provided in this document is designed to help your team improve case progression, as this is one area the courts can control. Timeliness of hearings has a significant impact on time to case closure, which means that courts can make a difference in the lives of children in the system. Data on page 1 comes from Fostering Court Improvement (fosteringcourtimprovement.org/ne) and data on pages 2-4 was collected through JUSTICE to track case progression timelines for all abuse/neglect cases that closed in 2008.

This is an increase from 11 months in 2006 due to Kimball's rate of 42 mos.

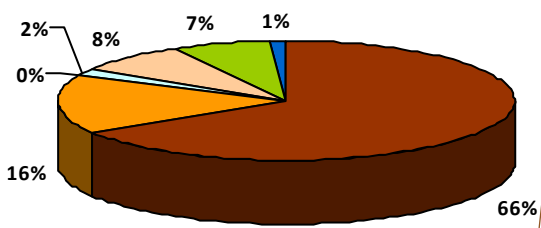
	District 12 T2 (2008)	Nebraska (2008)	Missouri (2008)	National (2003-2006)
Median days from report to removal	28 days	20	19	Not Available
Median length of stay	14 months	13 months	13 months	12 months
Median months to reunification	11 months	7 months	7 months	7 months
Median months to adoption	35 months	34 months	24 months	32 months

Type of discharge



District 12 Team 2

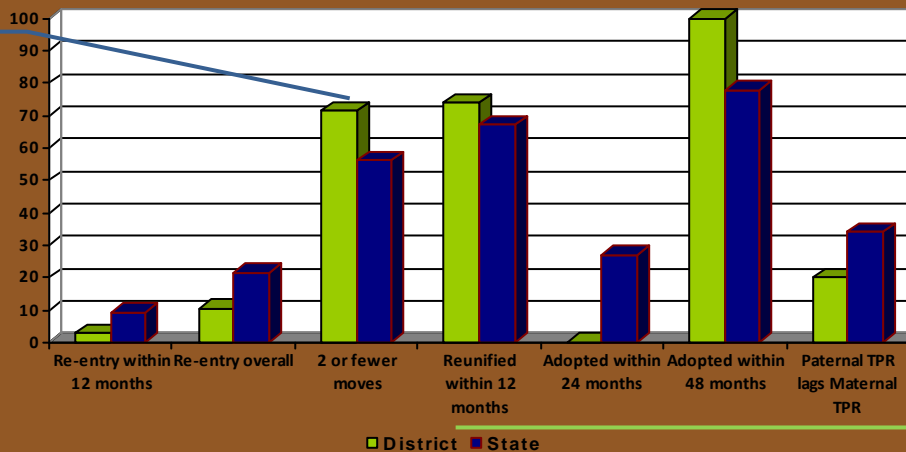
- Reunification
- Adoption
- Relative
- Transfer
- Emancipation
- Guardianship
- Other



Nebraska

Percentages for 2008 Fiscal Year

The percent of children with two or fewer moves is up from 35.8% in 2006 to 70% in 2008.



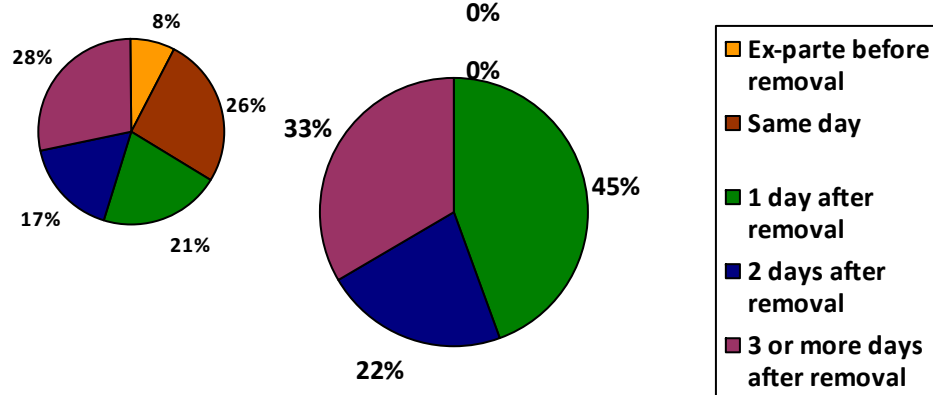
The percent reunified within 12 months has increased from 65% in 2006 to 72% in 2008.

Timeline progression: All ages

Removal to ex-parte

Nebraska (Median = 1 day)

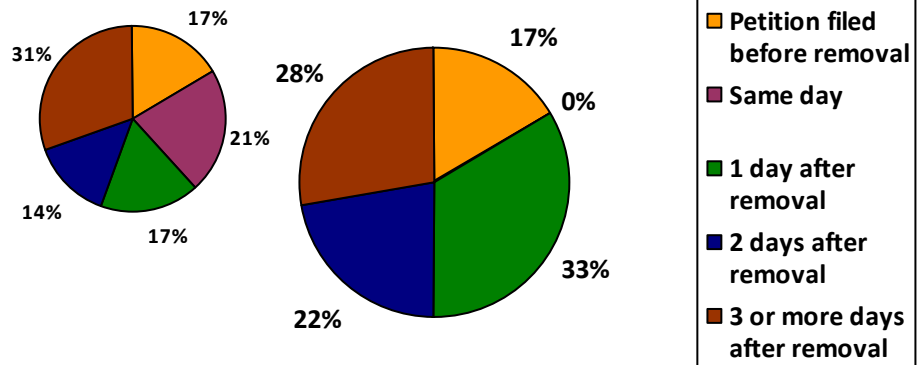
District 12, Team 2 (Median = 2 days)



Removal to Petition Filing

Nebraska (Median = 1 day)

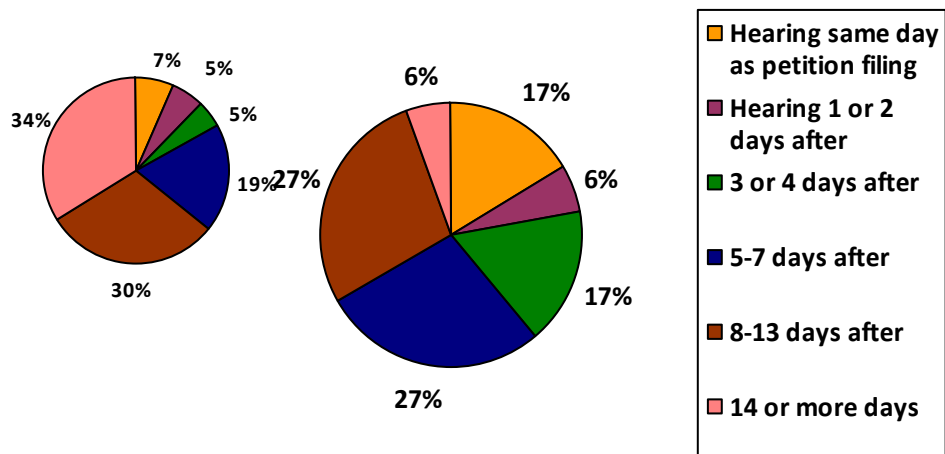
District 12, Team 2 (Median = 2 days)



Petition to First Hearing

Nebraska (Median = 9 days)

District 12, Team 2 (Median = 7 days)

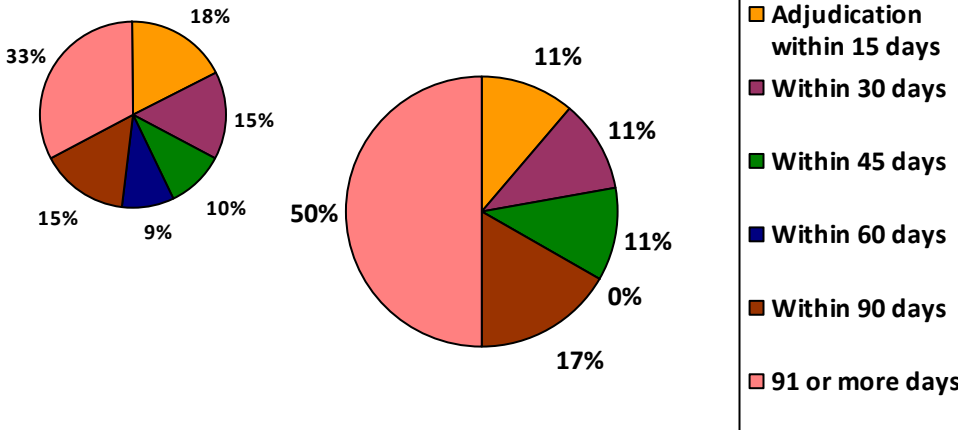


* Note: All data presented uses initial removal date to court closure date and may not match HHS reports

Removal to Adjudication

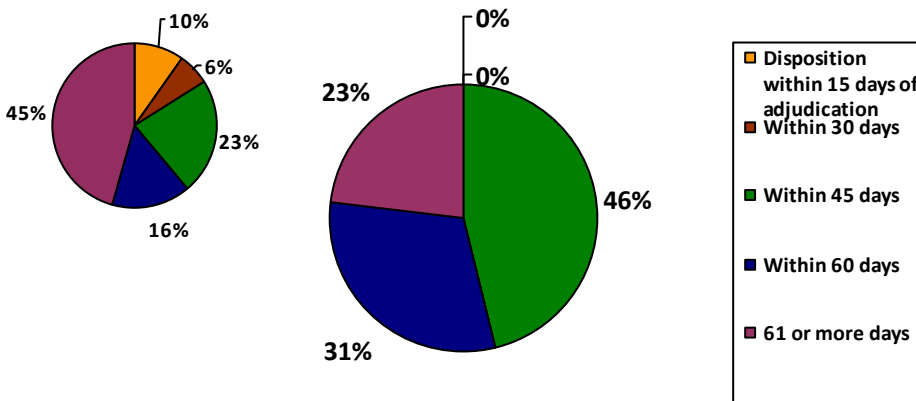
Nebraska (Median = 57 days) District 12, Team 2 (Median = 100 days)

NOTE: Almost twice the state median



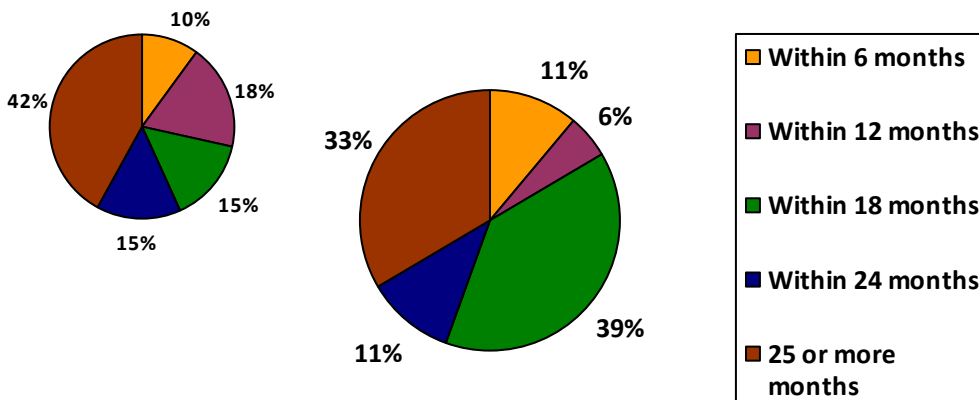
Adjudication to Disposition

Nebraska (Median = 56 days) District 12, Team 2 (Median = 49 days)



Removal to permanency

Nebraska (Median = 23 mo) District 12, Team 2 (Median = 16 mo)



Best practice recommendations

Removal to first hearing – 3 days

19% of 2008 District 12 cases held the first hearing within 3 days of removal

Removal to adjudication – 60 days

33% of 2008 District 12 cases adjudicated within 60 days.

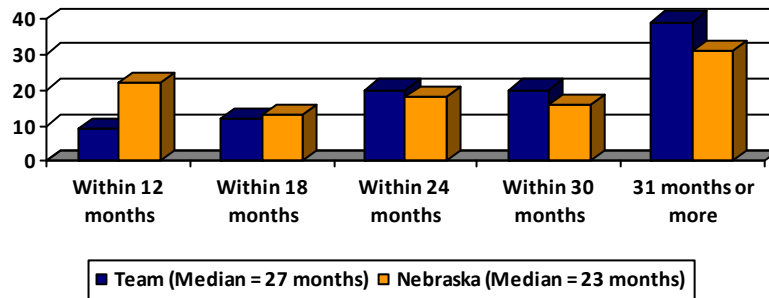
Adjudication to disposition – 30 days

0% of 2008 District 12 cases held a disposition within 30 days of adjudication

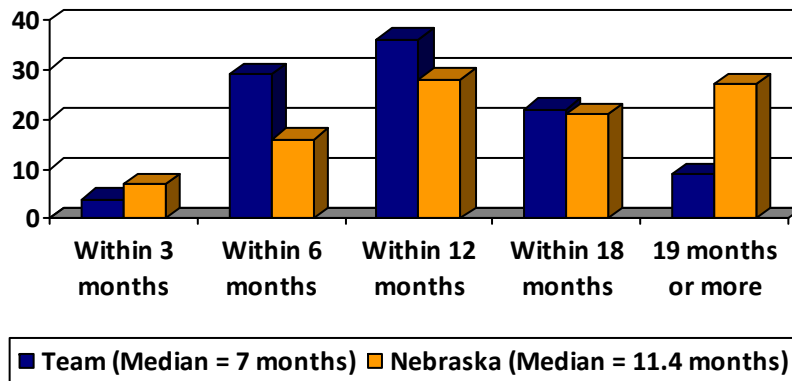
In other words, 22% of TPRs happen within 12 months statewide, compared to 7% for this team.

Overall, it is taking longer to progress to TPR for District 12 Team 2, but shorter to progress to adoption.

Percentages for time in months from removal to TPR



Percentages for time in months from TPR to adoption



Analysis of the case progression data for all Nebraska judges shows that judges who have more timely adjudications of their cases are also able to close their cases in a more timely fashion. Specifically, those judges who have a median time to adjudications in less than 30 days from removal, have a median time to case closure of 15.5 months. Those judges who have a median time to adjudication of 31-60 days, have a median time to case closure of 17.2 months. Judges with a median time to adjudication of 61-90 days have a median time to case closure of 18.4 months. Finally, judges who have a median time to adjudication of 91 or more days have a median time to case closure of 34.3 months.

Timeline	District	NE
Early Stages		
Removal to ex-parte	3 days	1 day
Removal to 3a petition	2 days	1 day
3a petition to first appearance	3 days	9 days
Removal to adjudication	69 days	62 days
Permanency Stages		
Adjudication to disposition	46 days	58 days
Removal to permanency	18 months	21 months
TPR Stages		
Removal to TPR	22 months	23 months
TPR to adoption	21 months	9 months

Case progression for Children ages 0-3