



Case Progression and Court Improvement Data Report for 2010



District 2 Team 3: Sarpy County

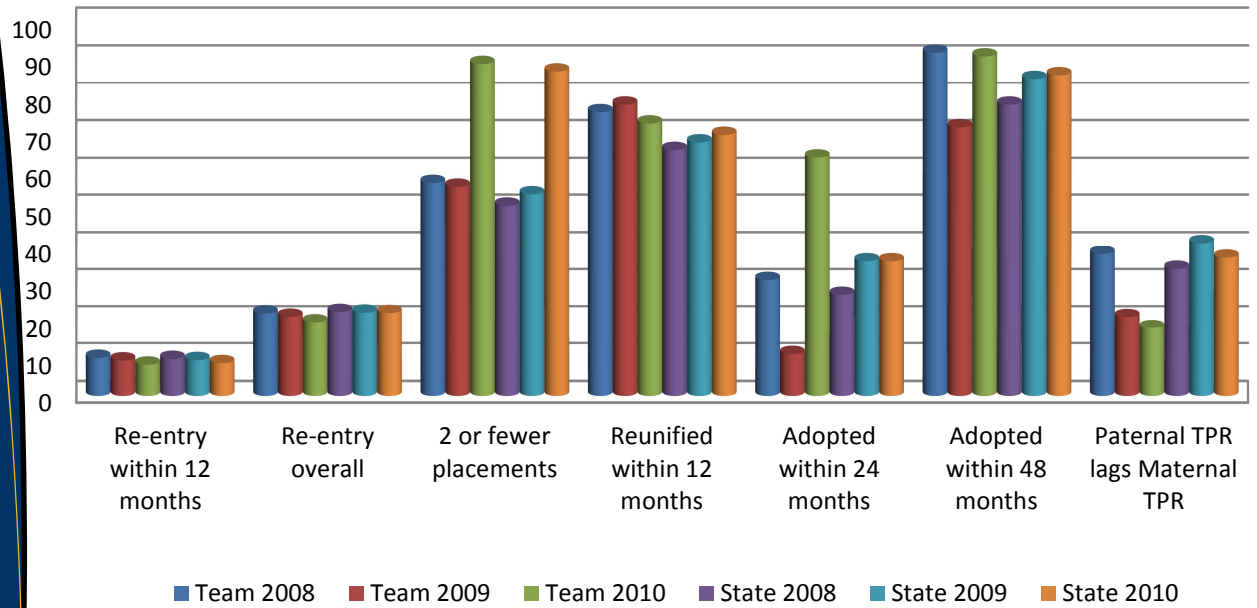


Information provided in this document is designed to help your team improve case progression, as this is one area the courts can control. Timeliness of hearings has a significant impact on time to case closure, which means that courts can make a difference in the lives of children in the system. Data on pages 1 and 2 come from Fostering Court Improvement (fosteringcourtimprovement.org/ne) and data on pages 3-8 were collected through JUSTICE to track case progression timelines for all abuse/neglect cases that closed in 2008, 2009, and 2010.

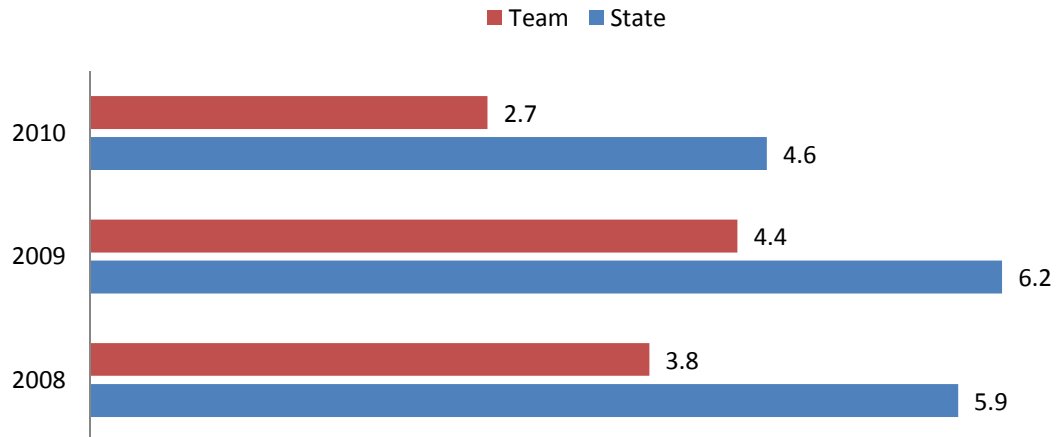
	2008	Team 2009	2010	2008	State 2009	2010	National 2009
Poverty rate*	7.1%	7.2%	n/a	13.7%	15.3%	n/a	20%
Median length of stay	8 months	7 months	10 months	13 months	12 months	14 months	14 months
Median months to reunification	5 months	5 months	8 months	7 months	7 months	11 months	n/a
Median months to adoption	30 months	34 months	20 months	34 months	29 months	29 months	n/a

* Poverty data comes from the U.S. Census Bureau. For the Fostering Court Improvement measures, 2010 refers to data from April 2010 through March 2011.

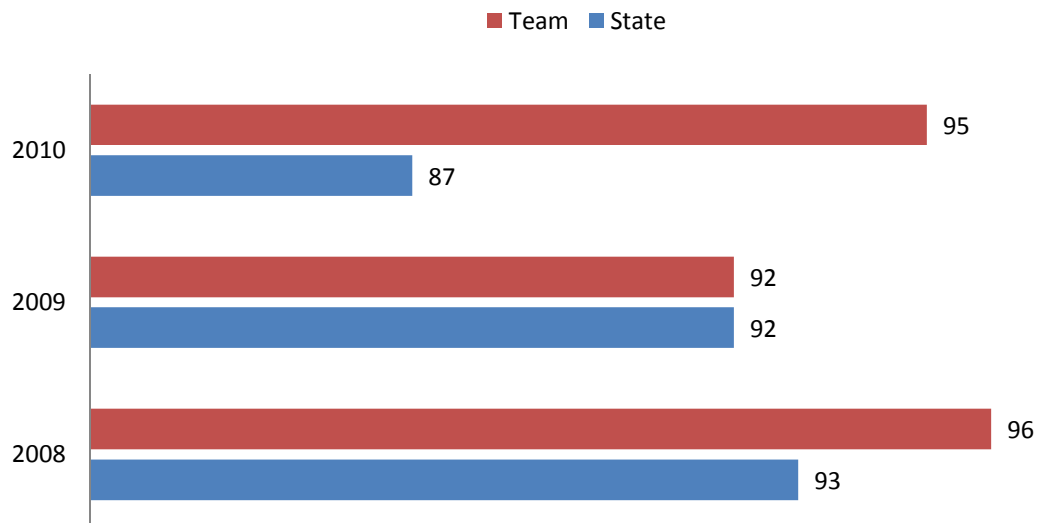
Percentages for 2008, 2009, and 2010



Rates of Removal per 10k Children



Percent of Children over 12 in Group Home



In Sarpy County, there were 118 abuse and neglect cases that closed between January 1 and December 31, 2008. In 2009, 99 such cases closed. In 2010, 115 abuse and neglect cases closed. The analyses below are based on that data.

Medians represent the center-point for cases in your team. Half of your cases had time that was shorter than the median, and half of cases had time longer than the median. N/r means values were "not reported." N/a means "not applicable" because the sample size was too small for analyses to be conducted.

Timeline progression: All ages

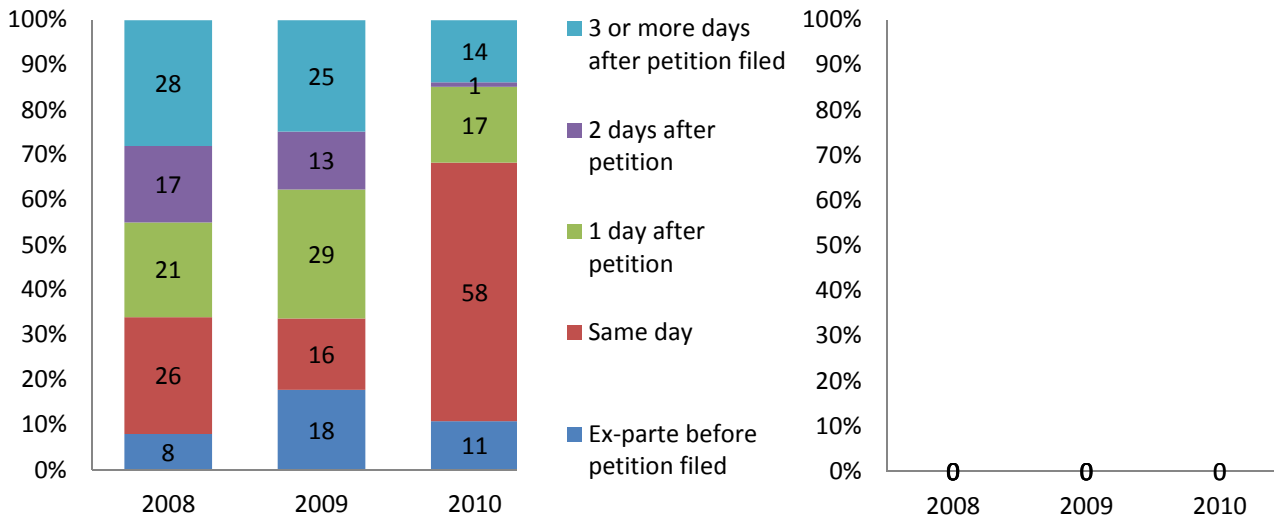
Nebraska

2008 Median = 1 day
2009 Median = 1 day
2010 Median = 0 days

Petition to ex-parte

District 2 Sarpy

2008 Median = n/r
2009 Median = n/r
2010 Median = n/r



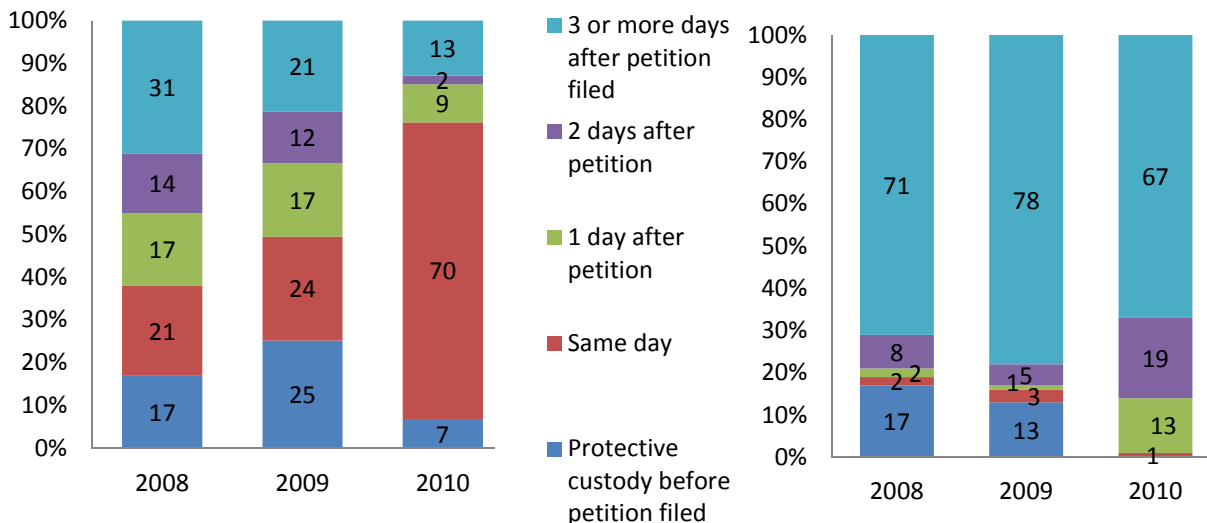
Petition Filing to Protective Custody

Nebraska

2008 Median = 1 day
2009 Median = 1 day
2010 Median = 0 days

District 2 Sarpy

2008 Median = 4 day
2009 Median = 7 days
2010 Median = 5 days



* Note:
All data
presented
uses initial
petition date
to court closure
date and may
not match HHS
reports

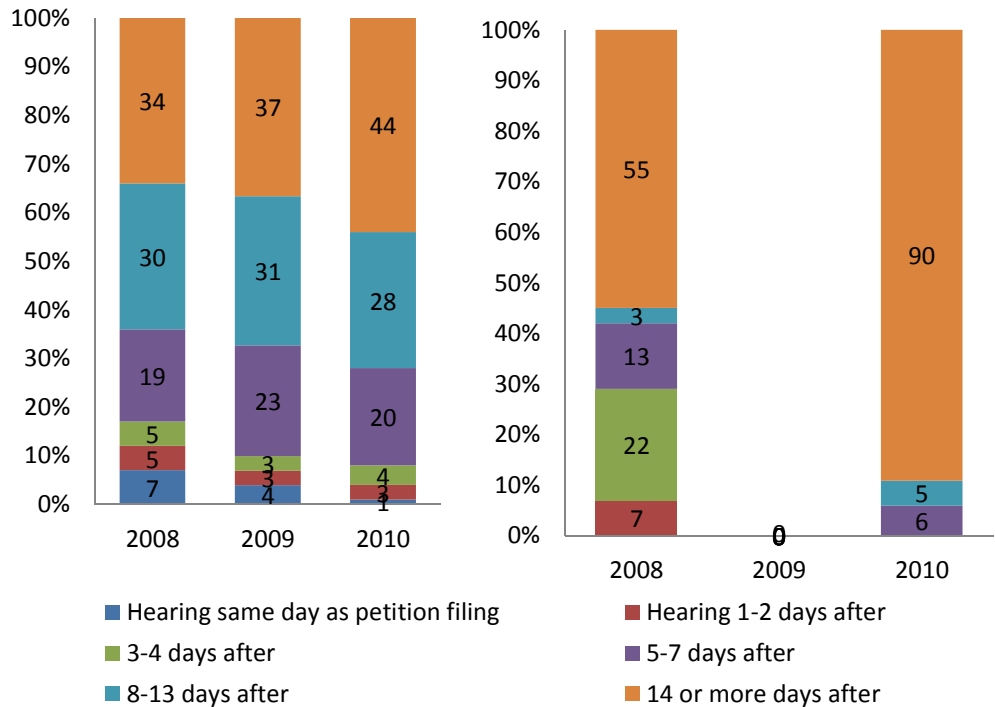
Petition to First Appearance

Nebraska

2008 Median = 9 days
2009 Median = 10 days
2010 Median = 12 days

District 2 Sarpy

2008 Median = 14 days
2009 Median = n/r
2010 Median = 66 days



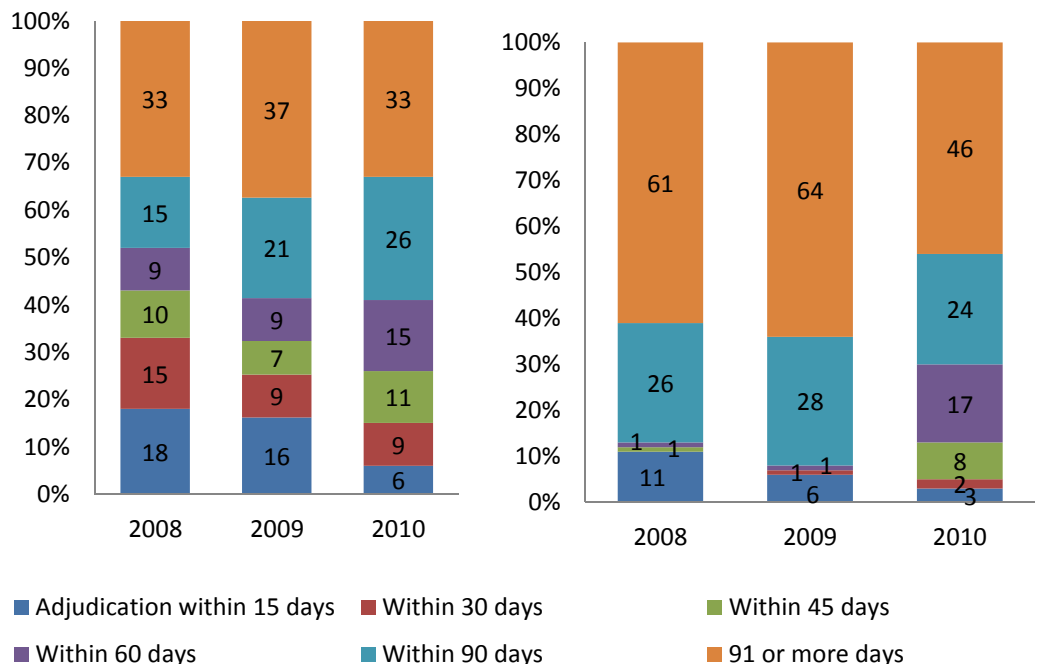
Petition to Adjudication

Nebraska

2008 Median = 57 days
2009 Median = 72 days
2010 Median = 73 days

District 2 Sarpy

2008 Median = 118 days
2009 Median = 101 days
2010 Median = 85 days



Best practice recommendations

Petition to Protective Custody – petition prior to or same day

1% of 2010 District 2 Sarpy cases had filed the petition the same day as protective custody order

Petition to adjudication – 60 days

30% of 2010 District 2 Sarpy cases held the adjudication within 60 days of petition filing

Adjudication to disposition – 30 days

8% of 2010 District 2 Sarpy cases held the disposition within 30 days

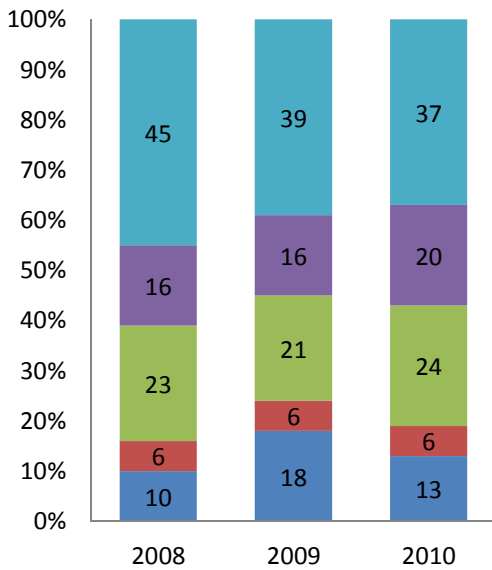
Adjudication to Disposition

Nebraska

2008 Median = 56 days

2009 Median = 49 days

2010 Median = 50 days

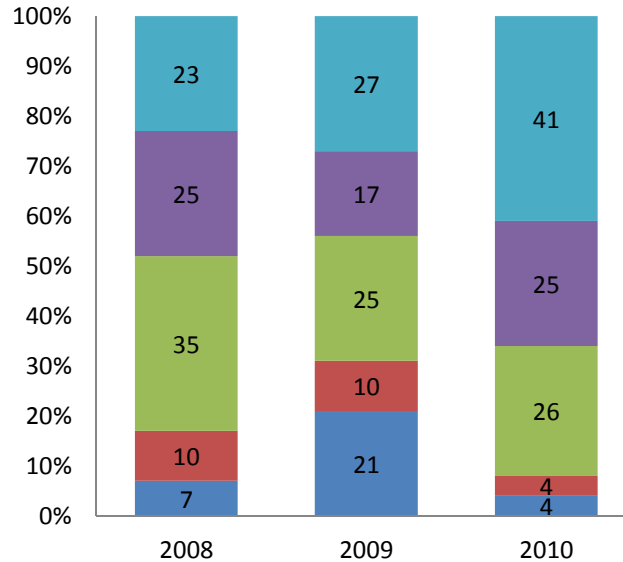


District 2 Sarpy

2008 Median = 43 days

2009 Median = 43 days

2010 Median = 56 days



■ Disposition within 15 days ■ Within 30 days ■ Within 45 days
 ■ Within 60 days ■ 61 or more days

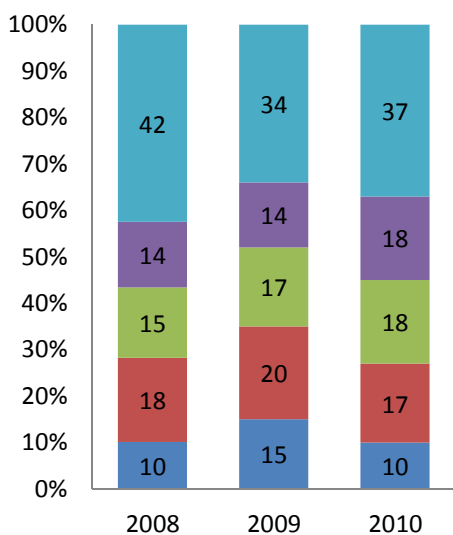
Petition to Case Closure

Nebraska

2008 Median = 23 months

2009 Median = 18 months

2010 Median = 19 months

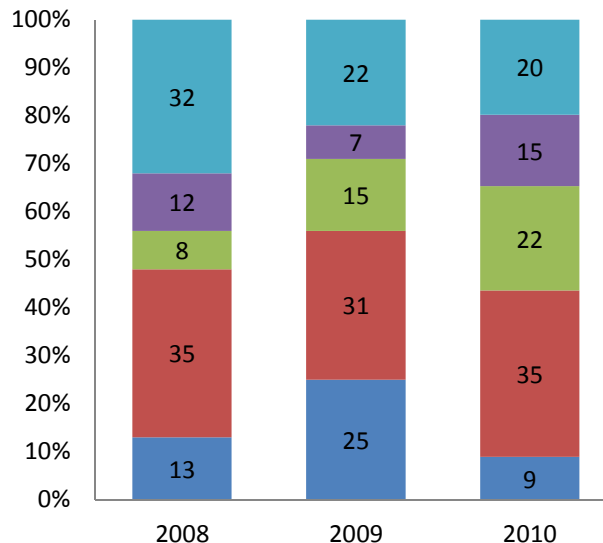


District 2 Sarpy

2008 Median = 13 months

2009 Median = 12 months

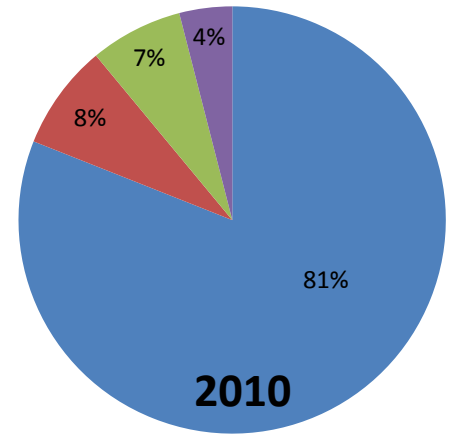
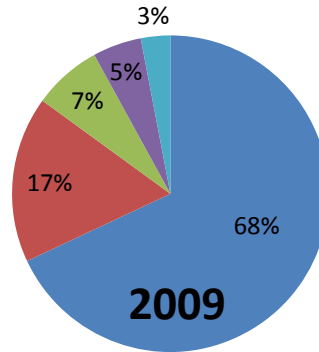
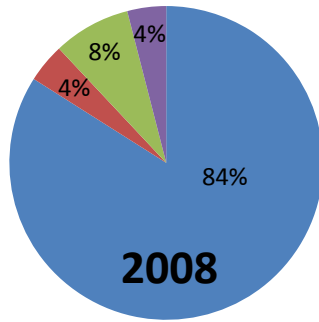
2010 Median = 14 months



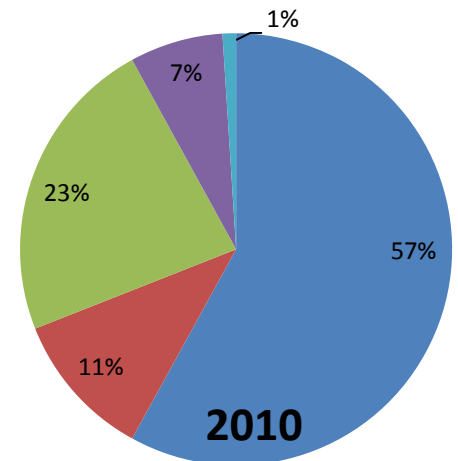
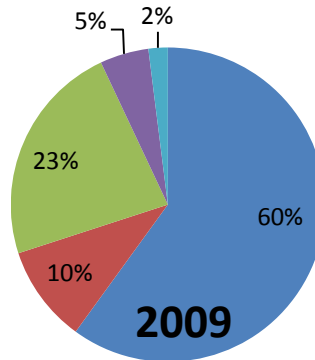
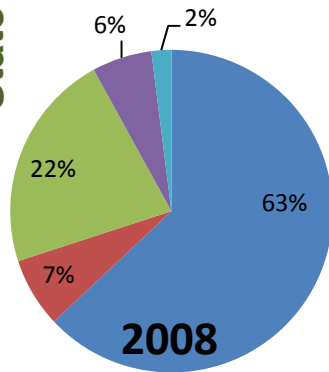
■ Within 6 months ■ Within 12 months ■ Within 18 months
 ■ Within 24 months ■ 25 or more months

Type of Discharge

Team



State



Reunification

Guardianship

Adoption

Independent Living

Other

Case Progression for Zero to Three

Median Times	Team			State		
	2008	2009	2010	2008	2009	2010
Early Stages						
Petition to Ex-parte	n/r	n/r	n/r	1 day	1 day	0 days
Petition to Protective custody	4 days	7 day	5 days	1 day	0 days	0 days
Petition to First Appearance	7 days	n/r	66 days	9 days	10 days	13 days
Petition to Adjudication	101 days	96 days	73 days	62 days	70 days	70 days
Permanency Stages						
Adjudication to Disposition	40 days	33 days	51 days	58 days	49 days	50 days
Petition to Case Closure	8 months	7 months	12 months	21 months	19 months	20 months
TPR Stages						
Petition to TPR	25 months	n/a	n/a	23 months	19 months	21 months
TPR to Adoption	6 months	n/a	n/a	9 months	7 months	8 months

Infants and toddlers make up approximately one-third of children in foster care in Nebraska. This early stage of the child's life is crucial to his/her development. Therefore, the court system must do everything it can to ensure timely and safe permanency for them. Additionally, the courts need to assure that the health, mental health, and educational (school readiness) needs of these young children are met.

Your team might work on one or all of the following:

- Reducing time to permanency for infants and toddlers
- Ensuring that parenting time recommendations are followed
- Increasing the use of high quality and stable child care
- Ensuring CAPTA Part C evaluations are occurring and young children are getting services they need
- Ensuring that infants and toddlers with mental health needs get evidence based interventions

Trends

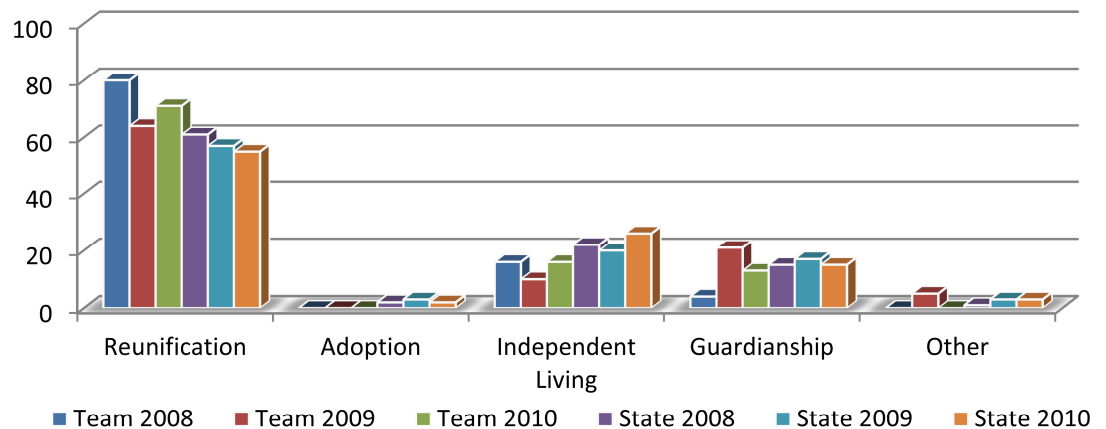
Sarpy County data suggests an increase in length of stay in foster care, time to reunification, and time to case closure from 2009 to 2010, but these timelines are still well below state averages and are within best practice guidelines. Still, the team may want to take a look at whether there has been an erosion to improvements in timeliness. One concern is that it appears that most youth over age 12 are in congregate care.





Adolescents Case Progression and Outcomes

Permanency Type for Youth 12 and Older (%)



Median Times	2008	Team 2009	2010	2008	State 2009	2010
Petition to Adjudication	146 days	112 days	96 days	53 days	79 days	72 days
Adjudication to Disposition	49 days	44 days	65 days	49 days	49 days	52 days
Average Number of Review Hearings	5	3	4	3	3	3
Petition to Case Closure	15 months	12 months	16 months	17 months	17 months	18 months
Petition to TPR	n/a	18 months	n/a	n/a	16 months	15 months
TPR to Case Closure	n/a	30 months	n/a	26 months	12 months	16 months