



# Case Progression and Court Improvement Data 2008



University of Nebraska-Lincoln Center on Children, Families, and the Law

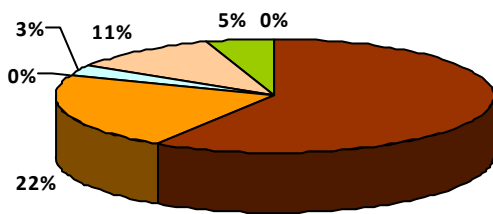
## District 3 - Lancaster County

Information provided in this document is designed to help your team improve case progression, as this is one area the courts can control. Timeliness of hearings has a significant impact on time to case closure, which means that courts can make a difference in the lives of children in the system. Data on page 1 comes from Fostering Court Improvement ([fosteringcourtimprovement.org/ne](http://fosteringcourtimprovement.org/ne)) and data on pages 2-4 was collected through JUSTICE to track case progression timelines for all abuse/neglect cases that closed in 2008.

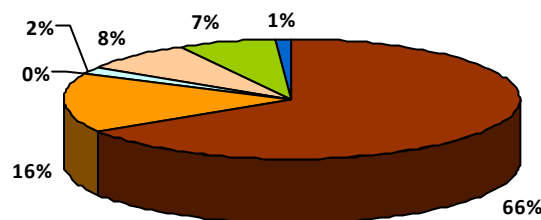
This is an increase from 26 days in 2006.

	District 3 (2008)	Nebraska (2008)	Missouri (2008)	National (2003-2006)
Median days from report to removal	45	20	19	Not Available
Median length of stay	17 months	13 months	13 months	12 months
Median months to reunification	12 months	7 months	7 months	7 months
Median months to adoption	35 months	34 months	24 months	32 months

### Type of discharge



- Reunification
- Adoption
- Relative
- Transfer
- Emancipation
- Guardianship
- Other

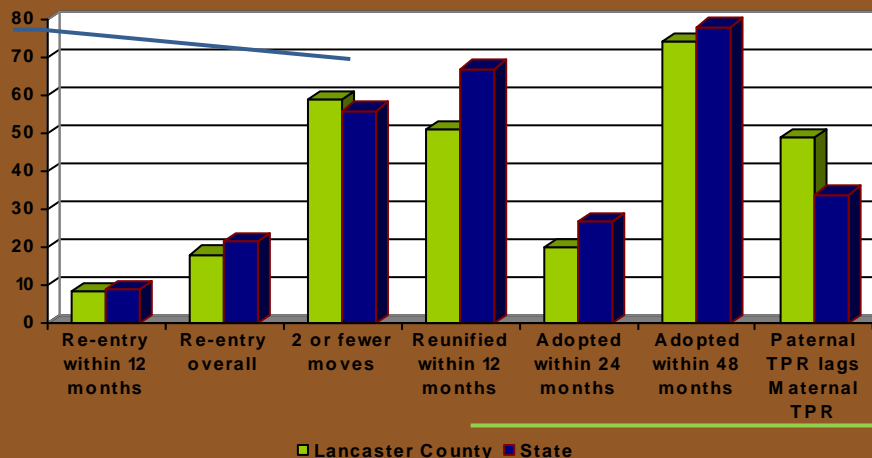


District 3

Nebraska

Percentages for 2008 Fiscal Year

For children in foster care more than 2 years, only 36% have had 2 or fewer moves.

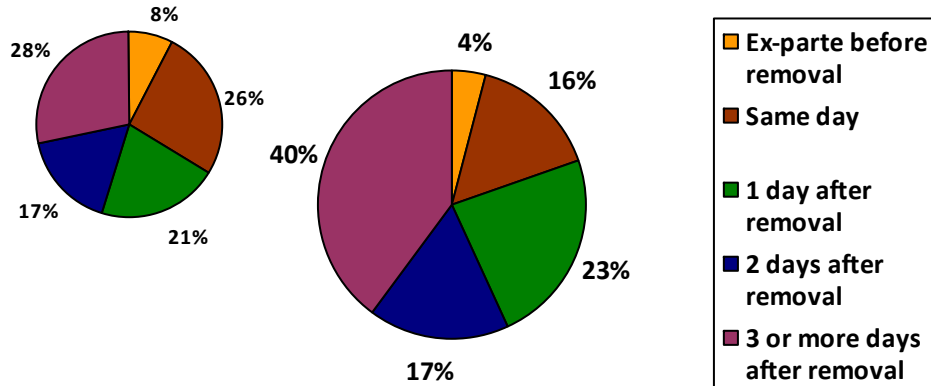


The rate of reunification happening in 12 months has dropped from 65% in 2006 to 51% in 2008.

## Timeline progression: All ages Removal to ex-parte

Nebraska (Median = 1 day)

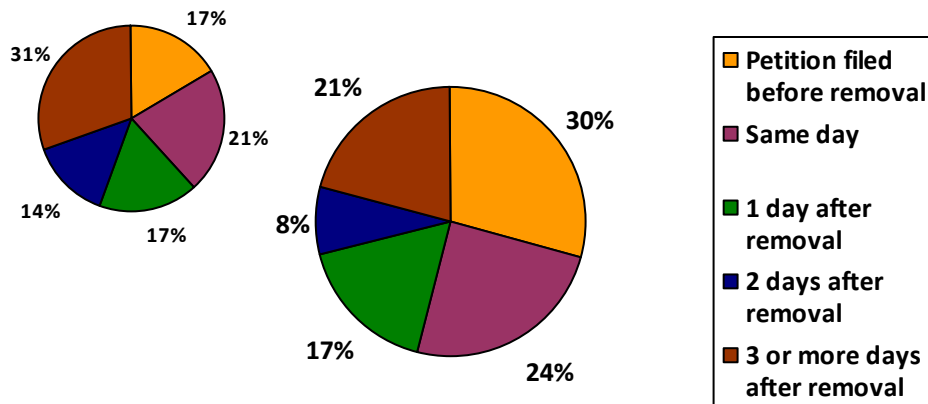
District 3 (Median = 1 day)



## Removal to petition filing

Nebraska (Median = 1 day)

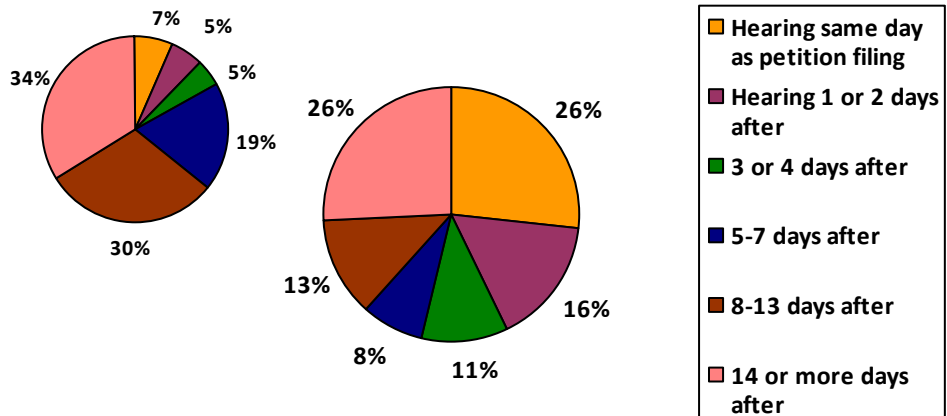
District 3 (Median = 0 days)



## Petition to first hearing

Nebraska (Median = 9 days)

District 3 (Median = 4 days)

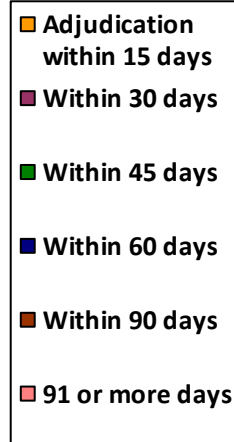
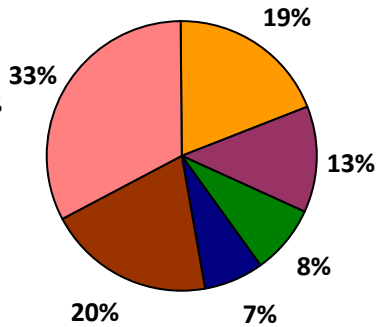
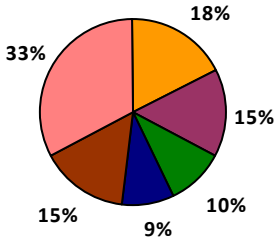


\* Note: All data presented uses initial removal date to court closure date and may not match HHS reports

### Removal to adjudication

Nebraska (Median = 57 days)

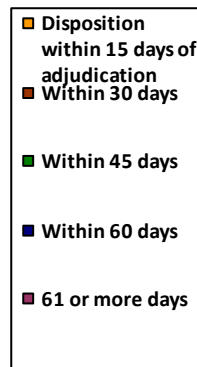
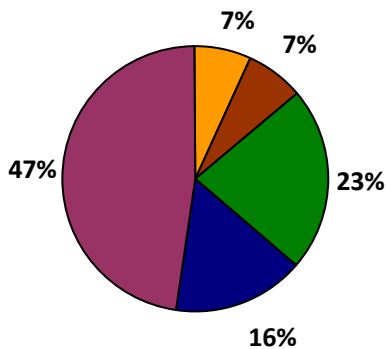
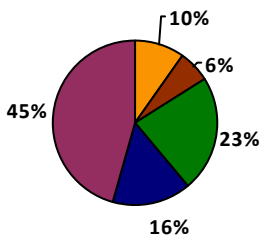
District 3 (Median = 69 days)



### Adjudication to disposition

Nebraska (Median = 56 days)

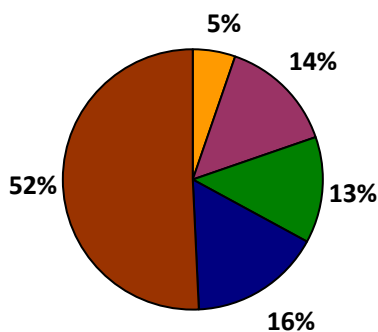
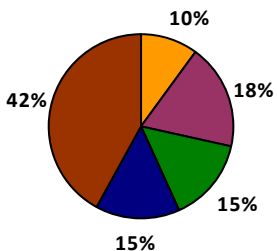
District 3 (Median = 57 days)



### Removal to permanency

Nebraska (Median = 23 months)

District 3 (Median = 27 months)



### Best practice recommendations

Removal to first hearing – 3 days

50% of 2008 District 3 cases held the first hearing within 3 days of removal

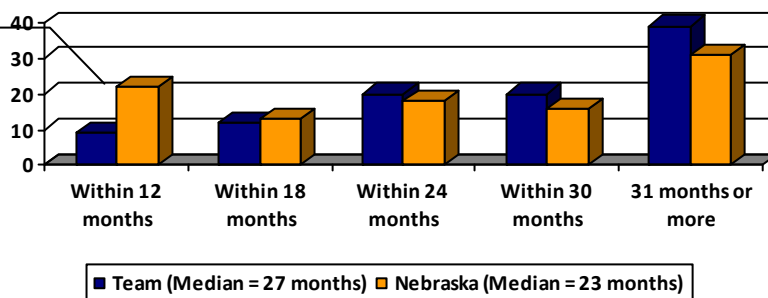
Removal to adjudication – 60 days

47% of 2008 District 3 cases adjudicated within 60 days.

Adjudication to disposition – 30 days

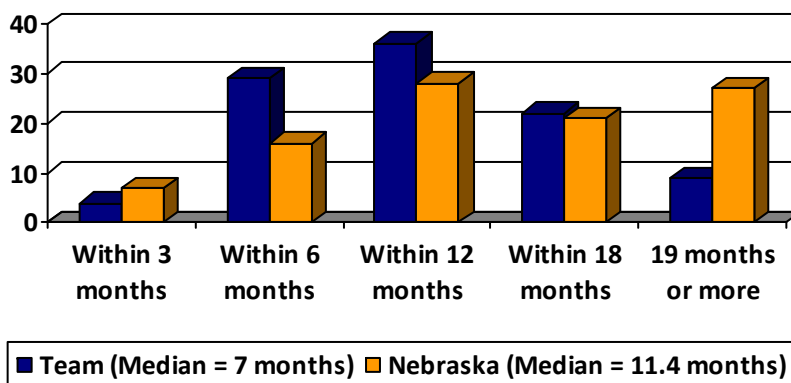
14% of 2008 District 3 cases held a disposition within 30 days of adjudication

Percentages for time in months from removal to TPR



In other words, 22% of TPRs happen within 12 months statewide, compared to 8% in District 3.

Percentages for time in months from TPR to adoption



Analysis of the case progression data for all Nebraska judges shows that judges who have more timely adjudications of their cases are also able to close their cases in a more timely fashion. Specifically, those judges who have a median time to adjudications in less than 30 days from removal, have a median time to case closure of 15.5 months. Those judges who have a median time to adjudication of 31-60 days, have a median time to case closure of 17.2 months. Judges with a median time to adjudication of 61-90 days have a median time to case closure of 18.4 months. Finally, judges who have a median time to adjudication of 91 or more days have a median time to case closure of 34.3 months.

Timeline	District	NE
<b>Early Stages</b>		
Removal to ex-parte	2 days	1 day
Removal to 3a petition	0 days	1 day
3a petition to first appearance	3 days	9 days
Removal to adjudication	75 days	62 days
<b>Permanency Stages</b>		
Adjudication to disposition	62 days	58 days
Removal to permanency	29 months	21 months
<b>TPR Stages</b>		
Removal to TPR	27 months	23 months
TPR to adoption	8 months	9 months

Case progression for Children ages 0-3