



University  
of  
Nebraska-  
Lincoln  
Center on  
Children,  
Families,  
and the  
Law

# Case Progression and Court Improvement Data Report for 2010



## District 3 Lancaster County

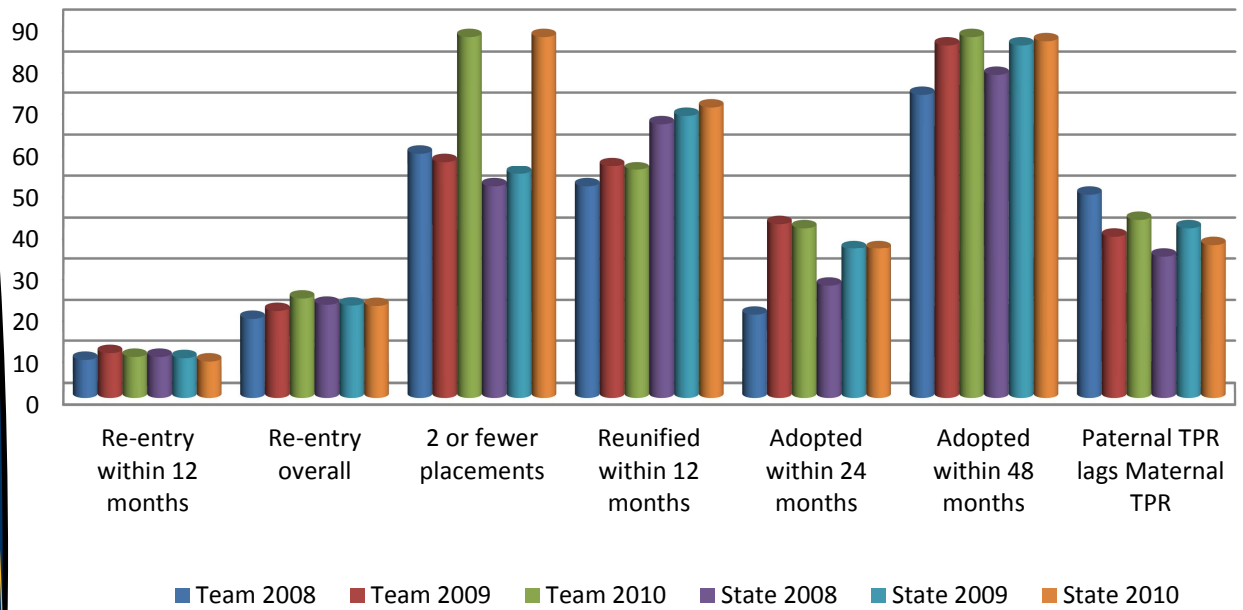


Information provided in this document is designed to help your team improve case progression, as this is one area the courts can control. Timeliness of hearings has a significant impact on time to case closure, which means that courts can make a difference in the lives of children in the system. Data on pages 1 and 2 come from Fostering Court Improvement ([fosteringcourtimprovement.org/ne](http://fosteringcourtimprovement.org/ne)) and data on pages 3-8 were collected through JUSTICE to track case progression timelines for all abuse/neglect cases that closed in 2008, 2009, and 2010.

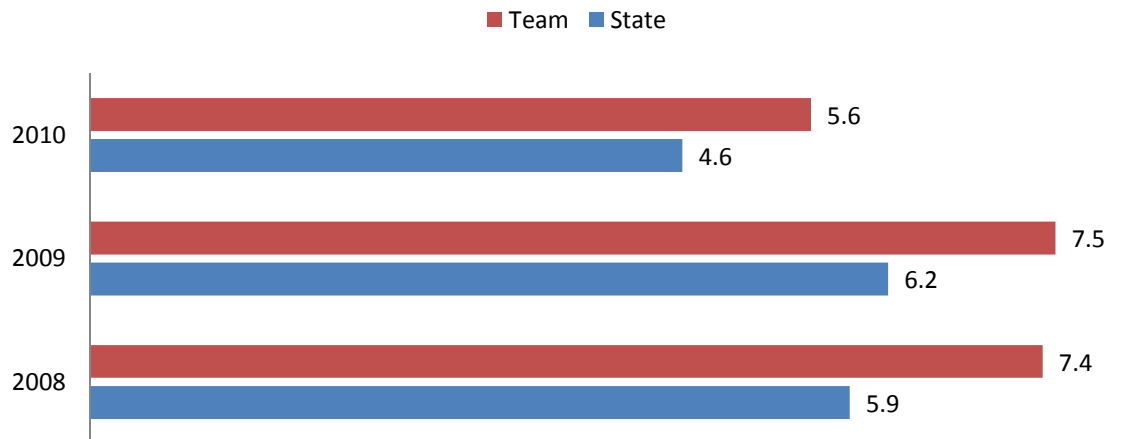
	2008	Team 2009	2010	2008	State 2009	2010	National 2009
<b>Poverty rate*</b>	11.3%	15.2%	n/a	13.7%	15.3%	n/a	20%
<b>Median length of stay</b>	17 months	17 months	18 months	13 months	12 months	14 months	14 months
<b>Median months to reunification</b>	12 months	10 months	15 months	7 months	7 months	11 months	n/a
<b>Median months to adoption</b>	35 months	27 months	27 months	34 months	29 months	29 months	n/a

\* Poverty data comes from the U.S. Census Bureau. For the Fostering Court Improvement measures, 2010 refers to data from April 2010 through March 2011.

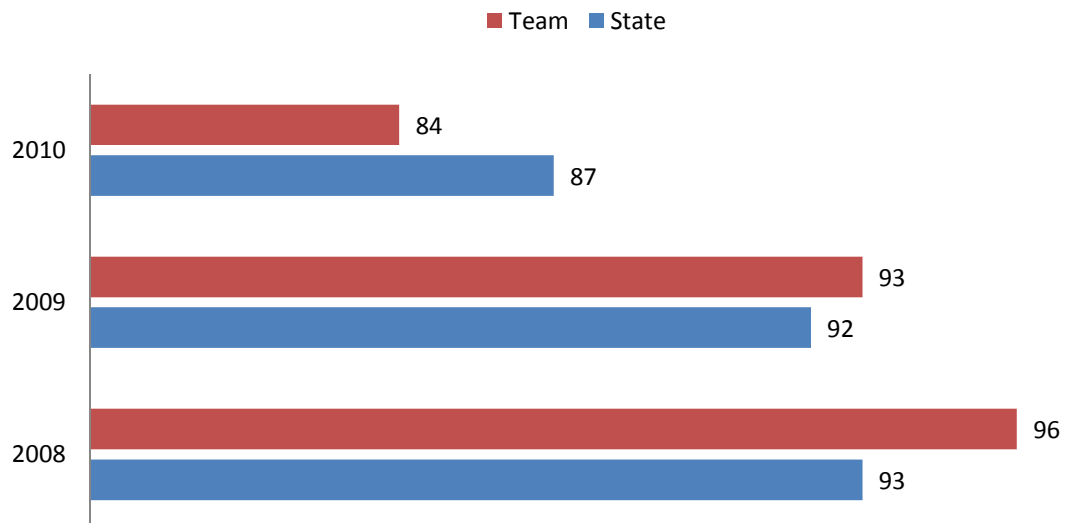
## Percentages for 2008, 2009, and 2010



## Rates of Removal per 10k Children



## Percent of Children over 12 in Group Home



In Lancaster County, there were 197 abuse and neglect cases that closed between January 1 and December 31, 2008. In 2009, 207 such cases closed. In 2010, 257 abuse and neglect cases closed. The analyses below are based on that data.

*Medians represent the center-point for cases in your team. Half of your cases had time that was shorter than the median, and half of cases had time longer than the median. N/r means the values were "not reported." N/a means "not applicable" because the sample size was too small for analyses to be conducted.*

## Timeline progression: All ages

### Nebraska

### Petition to ex-parte

### District 3

2008 Median = 1 day

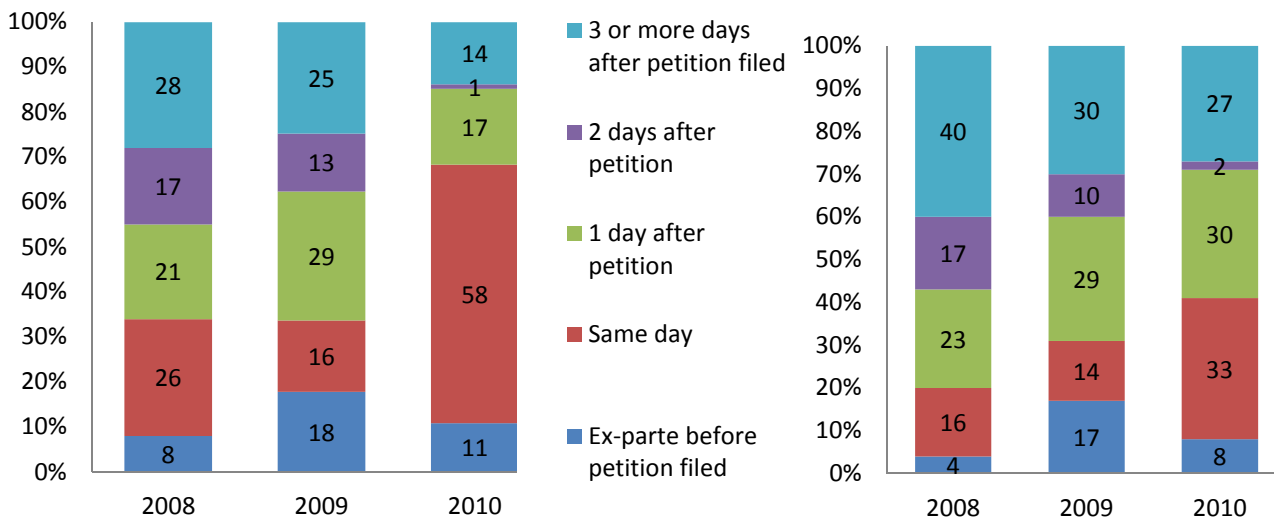
2009 Median = 1 day

2010 Median = 0 days

2008 Median = 1 day

2009 Median = 1 day

2010 Median = 1 day



## Petition Filing to Protective Custody

### Nebraska

### District 3

2008 Median = 1 day

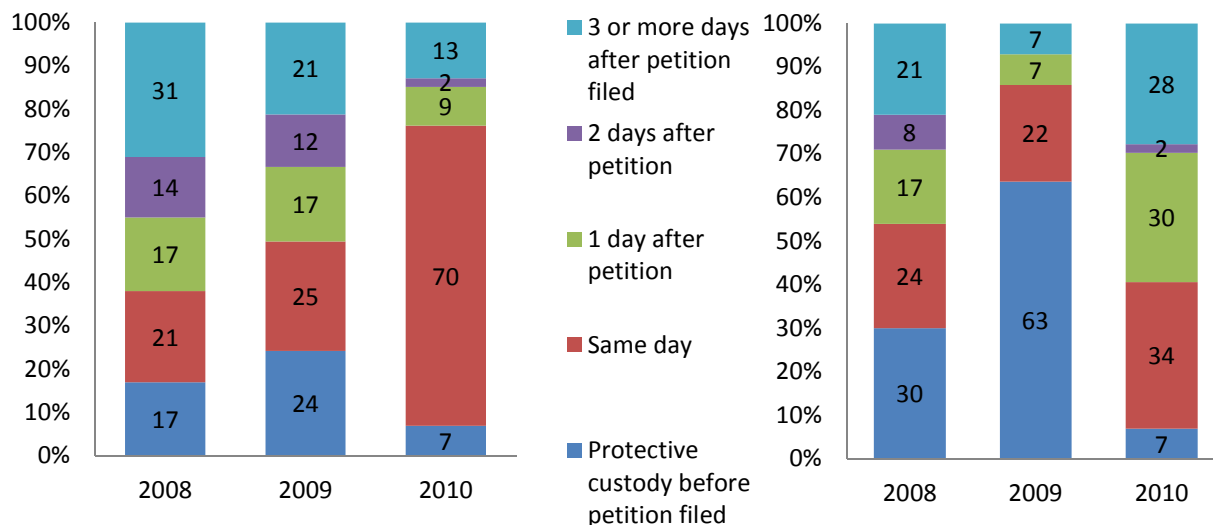
2009 Median = 1 day

2010 Median = 0 days

2008 Median = 0 days

2009 Median = 0 days

2010 Median = 1 day



*\* Note:  
All data  
presented  
uses initial  
petition date  
to court closure  
date and may  
not match HHS  
reports*

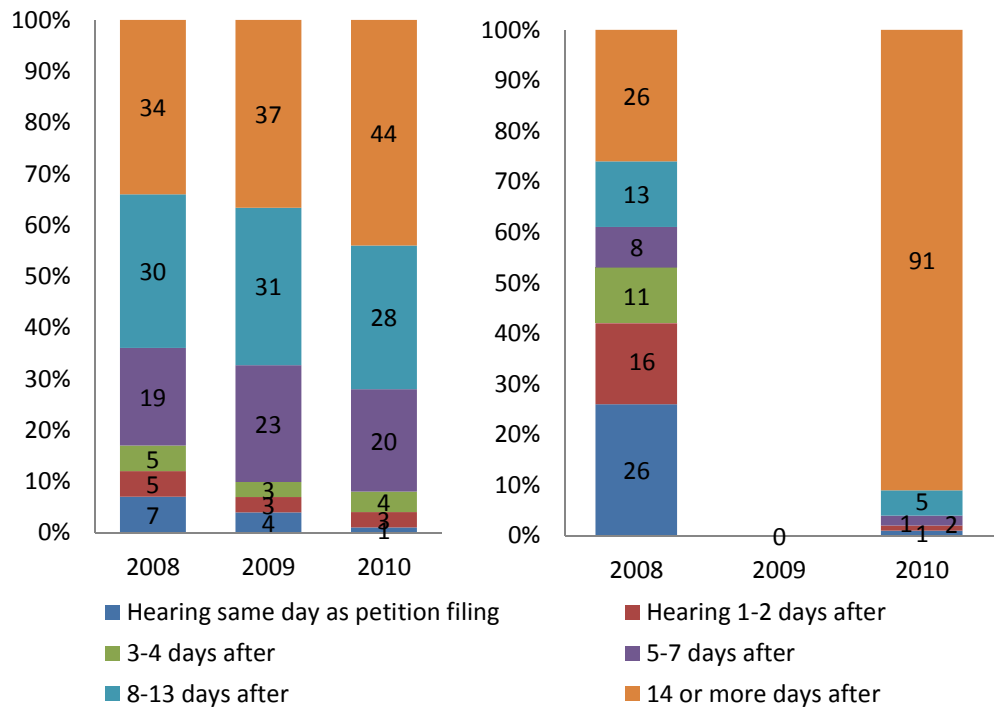
## Petition to First Appearance

### Nebraska

2008 Median = 9 days  
2009 Median = 10 days  
2010 Median = 12 days

### District 3

2008 Median = 4 days  
2009 Median = n/r  
2010 Median = 35 days



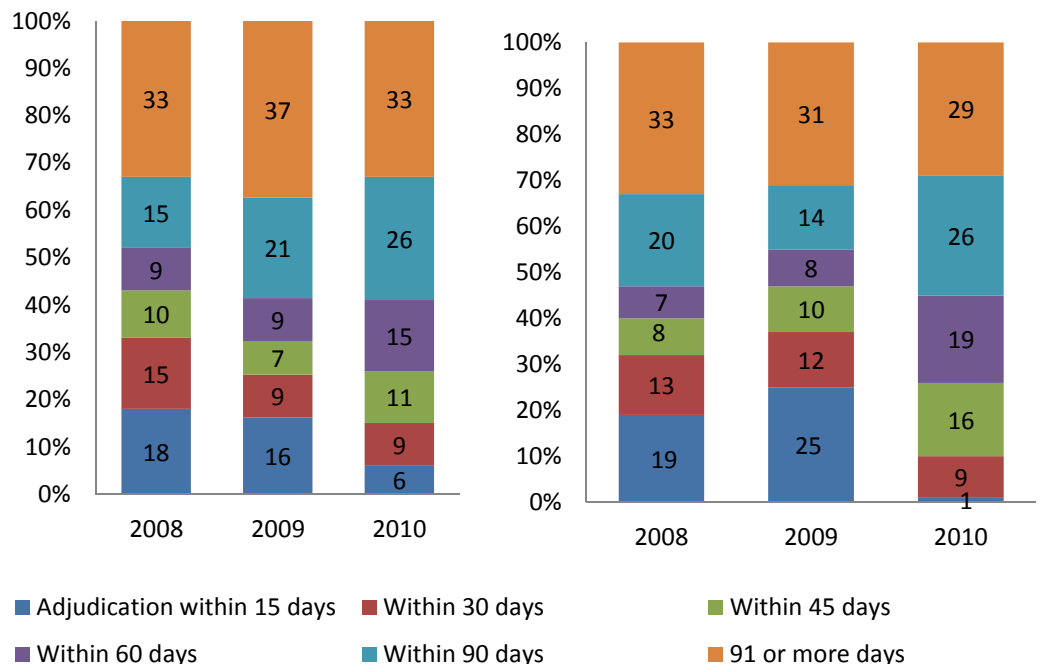
## Petition to Adjudication

### Nebraska

2008 Median = 57 days  
2009 Median = 72 days  
2010 Median = 73 days

### District 3

2008 Median = 69 days  
2009 Median = 51 days  
2010 Median = 67 days



**Best practice recommendations**

**Petition to Protective Custody – petition prior to or same day**

34% of 2010 District 3 cases had filed the petition the same day as protective custody order

**Petition to adjudication – 60 days**

45% of 2010 District 3 cases held the adjudication within 60 days of petition filing

**Adjudication to disposition – 30 days**

15% of 2010 District 3 cases held the disposition within 30 days of adjudication

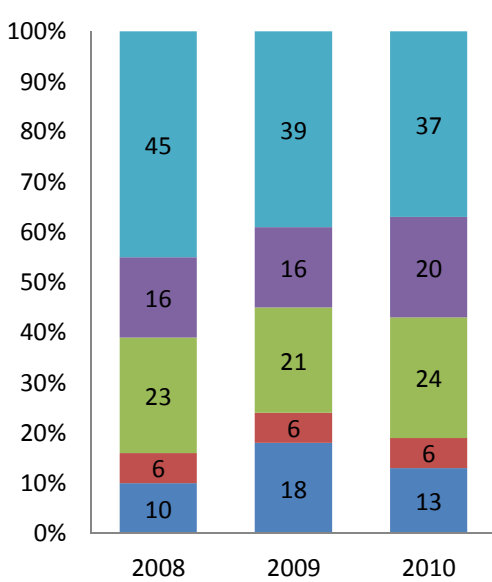
## Adjudication to Disposition

### Nebraska

2008 Median = 56 days

2009 Median = 49 days

2010 Median = 50 days

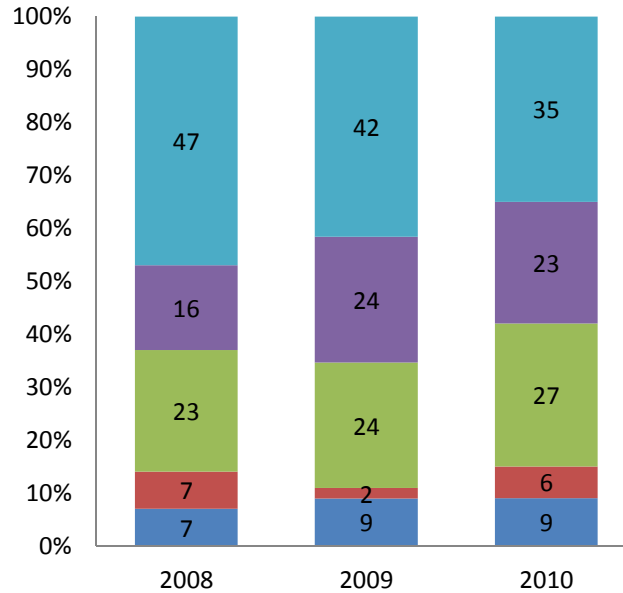


### District 3

2008 Median = 57 days

2009 Median = 53 days

2010 Median = 49 days



■ Disposition within 15 days   ■ Within 30 days   ■ Within 45 days  
■ Within 60 days   ■ 61 or more days

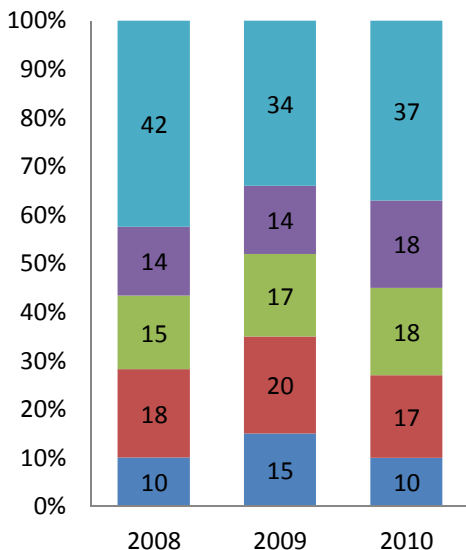
## Petition to Case Closure

### Nebraska

2008 Median = 23 months

2009 Median = 18 months

2010 Median = 19 months

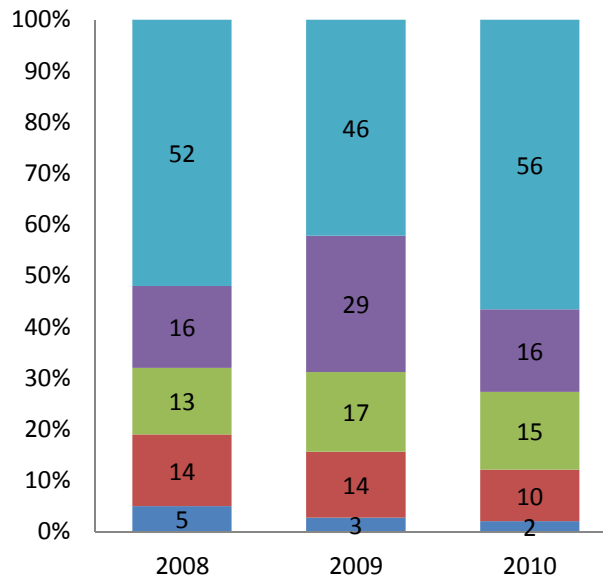


### District 3

2008 Median = 27 months

2009 Median = 23 months

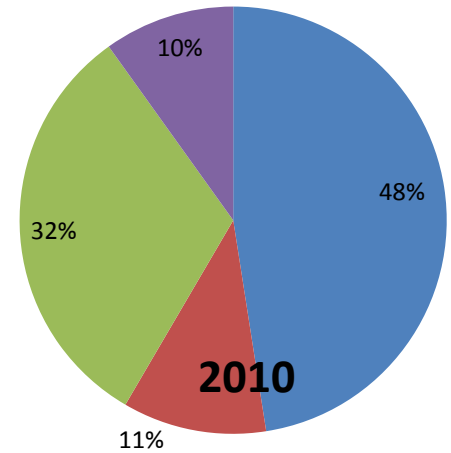
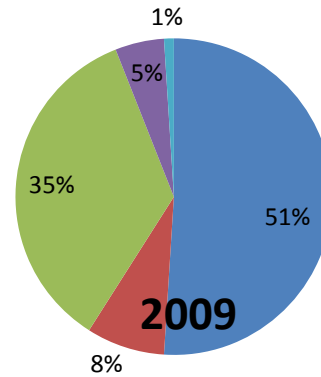
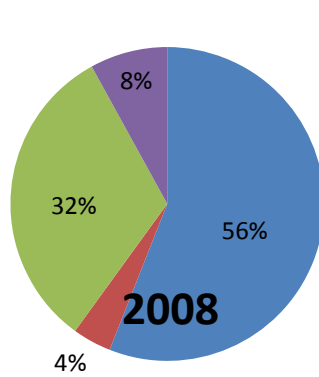
2010 Median = 27 months



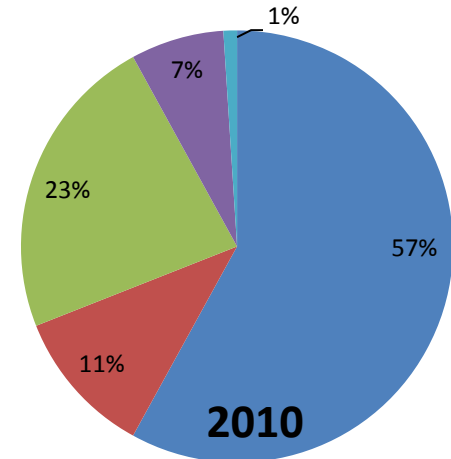
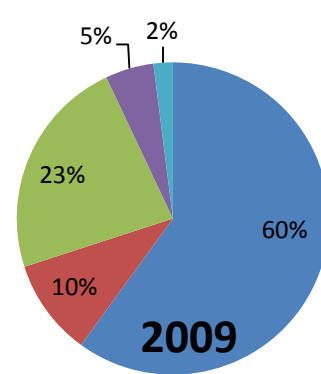
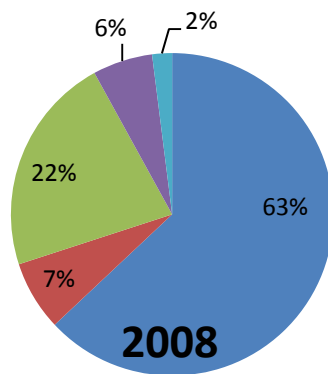
■ Within 6 months   ■ Within 12 months   ■ Within 18 months  
■ Within 24 months   ■ 25 or more months

## Type of Discharge

Team



State



■ Reunification

■ Guardianship

■ Adoption

■ Independent Living

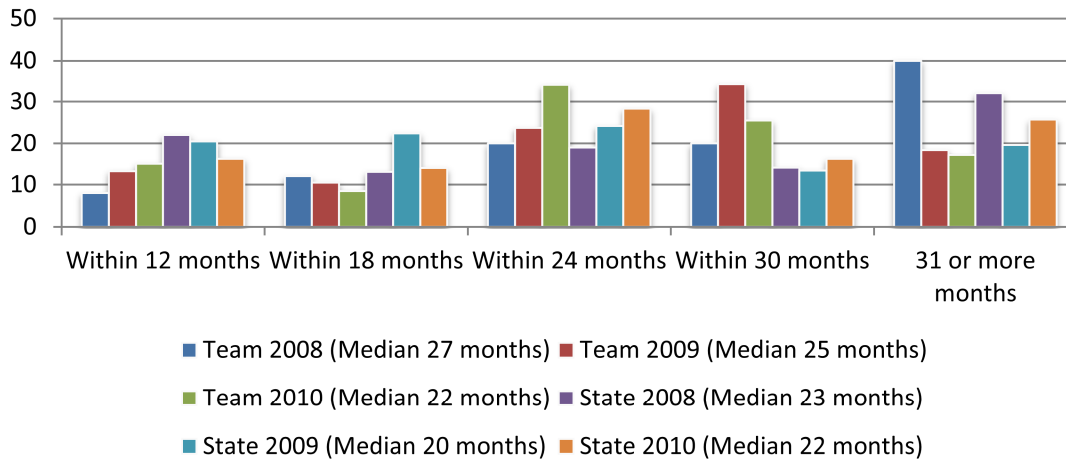
■ Other

## Case Progression for Zero to Three

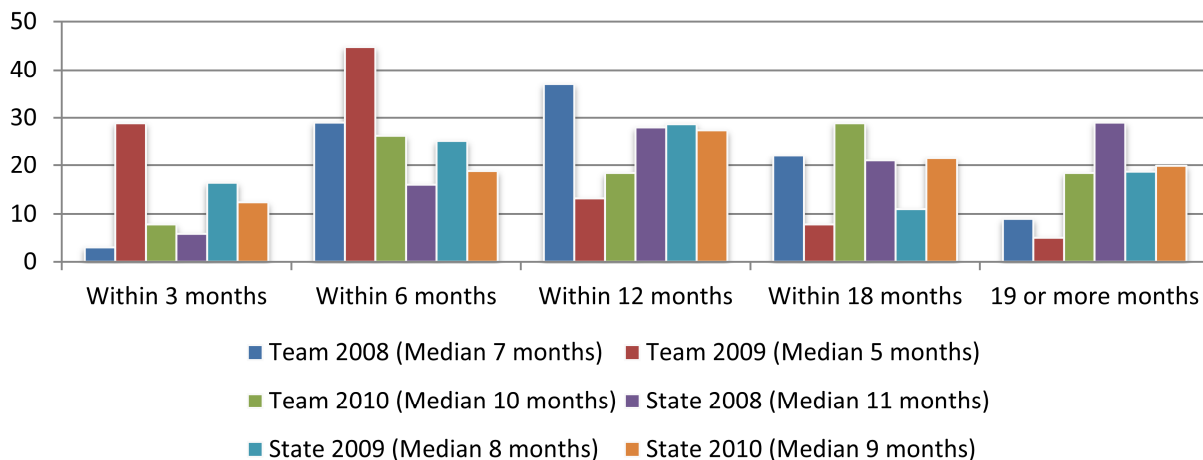
Median Times	Team			State		
	2008	2009	2010	2008	2009	2010
<b>Early Stages</b>						
Petition to Ex-parte	2 days	1 day	1 day	1 day	1 day	0 days
Petition to Protective custody	0 day	0 days	1 day	1 day	0 days	0 days
Petition to First Appearance	3 days	n/a	34 days	9 days	10 days	13 days
Petition to Adjudication	75 days	62 days	58 days	62 days	70 days	70 days
<b>Permanency Stages</b>						
Adjudication to Disposition	62 days	59 days	49 days	58 days	49 days	50 days
Petition to Case Closure	29 months	23 months	23 months	21 months	19 months	20 months
<b>TPR Stages</b>						
Petition to TPR	27 months	21 months	20 months	23 months	19 months	21 months
TPR to Adoption	8 months	6 months	9 months	9 months	7 months	8 months



## Petition to TPR - All Ages

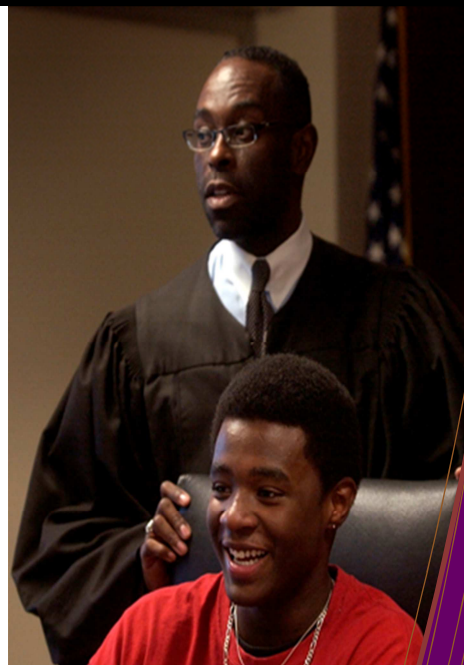


## TPR to Adoption - All Ages



## Trends

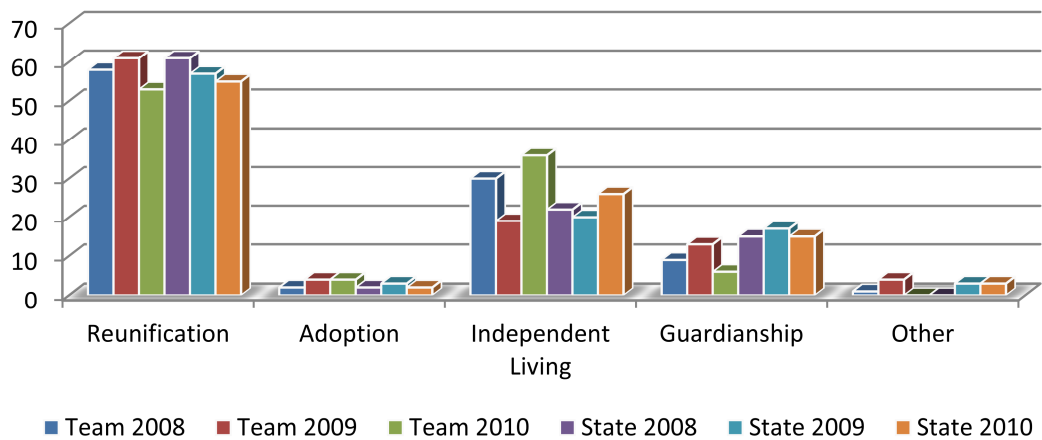
Lancaster County data suggests that times to reunification and case closure lengthened from 2009 to 2010 after a decrease from 2008 to 2009. Adjudications and dispositions are also taking far longer than best practice guidelines. Since there are only three years of data, this might not reflect actual trends but the team might look at whether improvements in achieving timely court events and permanency have eroded in the past year. Specific infant and toddler data also show that while there have been slight improvements, there continue to be long delays which is of great concern considering the developmental time clocks of the youngest children in care. Finally, there seems to be a steady increase in the number of older youth who are aging out of the system (independent living) in Lancaster County, which is also a reason for concern given all we know about the huge risks facing young people who leave the system without a family network to support them. A positive trend is a decrease in congregate care for youth over twelve.





## Adolescents Case Progression and Outcomes

### Permanency Type for Youth 12 and Older (%)



Median Times	2008	Team 2009	2010	2008	State 2009	2010
Petition to Adjudication	22 days	40 days	70 days	53 days	79 days	72 days
Adjudication to Disposition	55 days	51 days	50 days	49 days	49 days	52 days
Average Number of Review Hearings	4	3	5	3	3	3
Petition to Case Closure	20 months	22 months	25 months	17 months	17 months	18 months
Petition to TPR	12 months	n/a	n/a	n/a	16 months	15 months
TPR to Case Closure	15 months	n/a	n/a	26 months	12 months	16 months