



University
of
Nebraska-
Lincoln
Center on
Children,
Families,
and the
Law

Case Progression and Court Improvement Data Report for 2010



District 9 Team Grand Island: Hall County

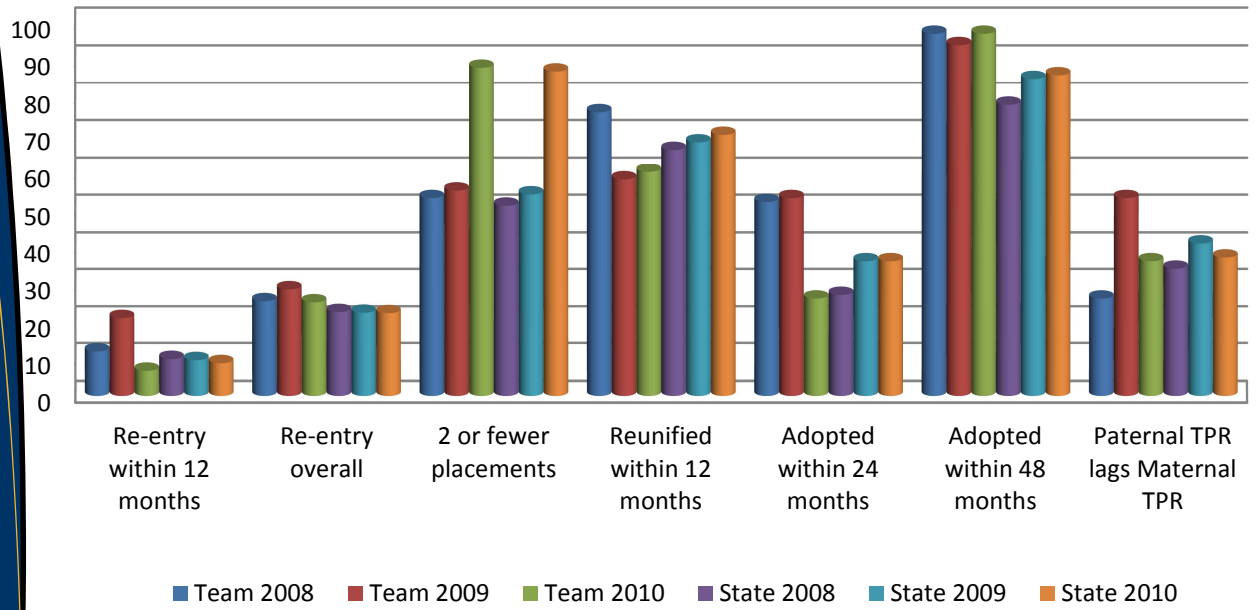


Information provided in this document is designed to help your team improve case progression, as this is one area the courts can control. Timeliness of hearings has a significant impact on time to case closure, which means that courts can make a difference in the lives of children in the system. Data on pages 1 and 2 come from Fostering Court Improvement (fosteringcourtimprovement.org/ne) and data on pages 3-8 were collected through JUSTICE to track case progression timelines for all abuse/neglect cases that closed in 2008, 2009, and 2010.

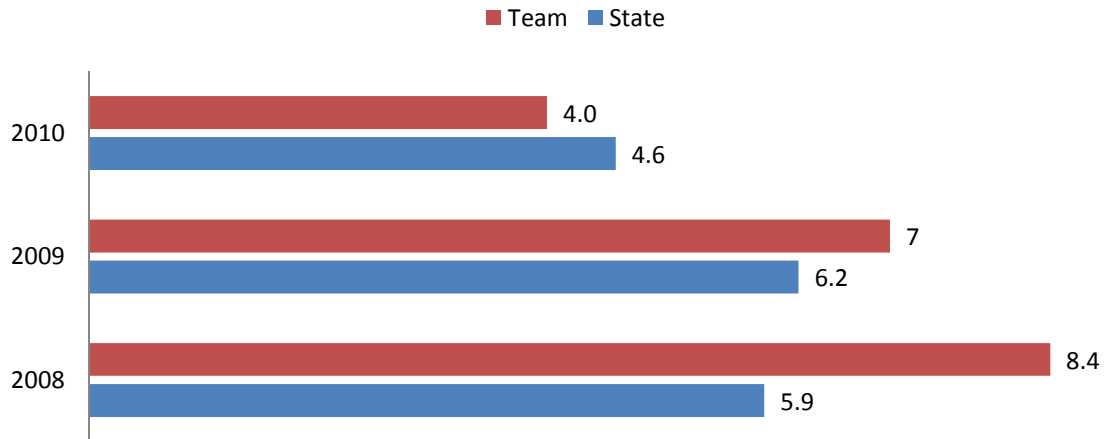
	2008	Team 2009	2010	2008	State 2009	2010	National 2009
Poverty rate*	16.9%	16.9%	n/a	13.7%	15.3%	n/a	20%
Median length of stay	11 months	13 months	19 months	13 months	12 months	14 months	14 months
Median months to reunification	6 months	10 months	11 months	7 months	7 months	11 months	n/a
Median months to adoption	22 months	23 months	30 months	34 months	29 months	29 months	n/a

* Poverty data comes from the U.S. Census Bureau. For the Fostering Court Improvement measures, 2010 refers to data from April 2010 through March 2011.

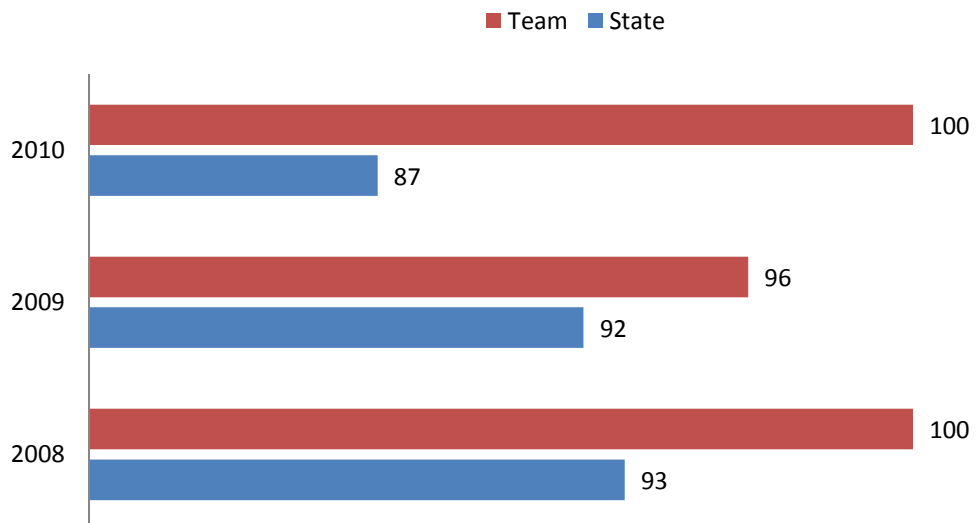
Percentages for 2008, 2009, and 2010



Rates of Removal per 10k Children



Percent of Children over 12 in Group Home



In District 9 GI, there were 91 abuse and neglect cases that closed between January 1 and December 31, 2008. In 2009, 62 such cases closed. In 2010, 71 abuse and neglect cases closed. The analyses below are based on that data.

Medians represent the center-point for cases in your team. Half of your cases had time that was shorter than the median, and half of cases had time longer than the median. N/a means "not applicable" because the sample size was too small for analyses to be conducted.

Timeline progression: All ages

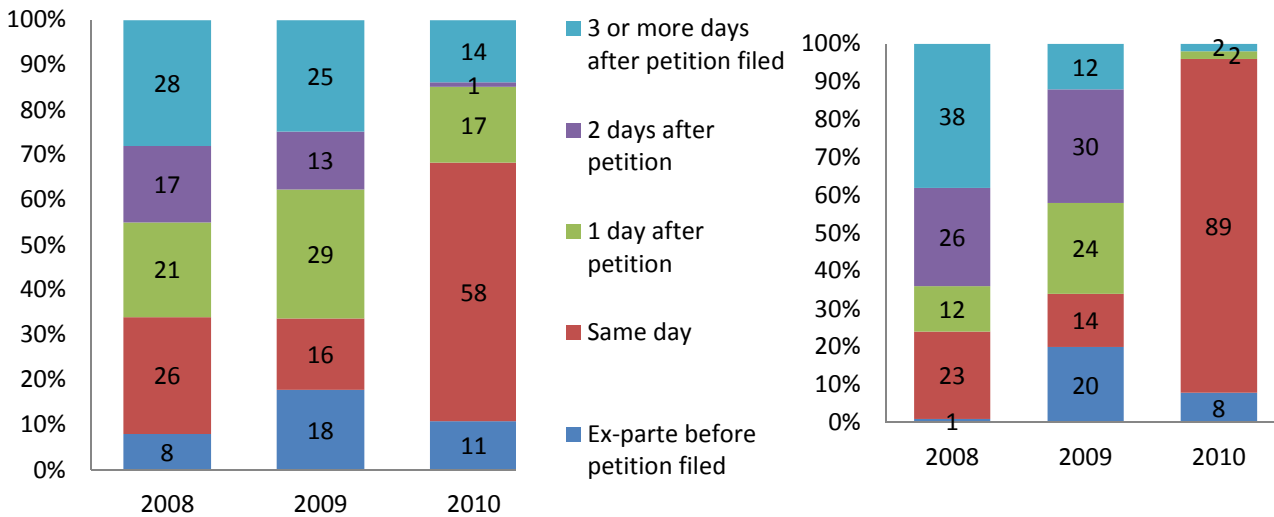
Nebraska

2008 Median = 1 day
2009 Median = 1 day
2010 Median = 0 days

Petition to ex-parte

District 9 Team GI

2008 Median = 2 days
2009 Median = 1 day
2010 Median = 0 days



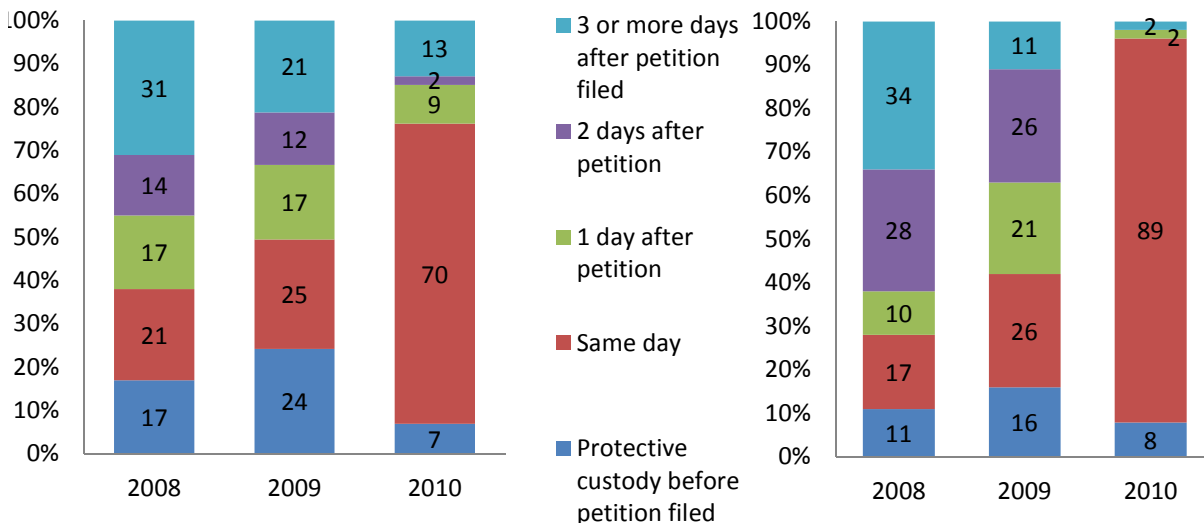
Petition Filing to Protective Custody

Nebraska

2008 Median = 1 day
2009 Median = 1 day
2010 Median = 0 days

District 9 Team GI

2008 Median = 2 days
2009 Median = 1 day
2010 Median = 0 days



* Note:
All data presented uses initial petition date to court closure date and may not match HHS reports

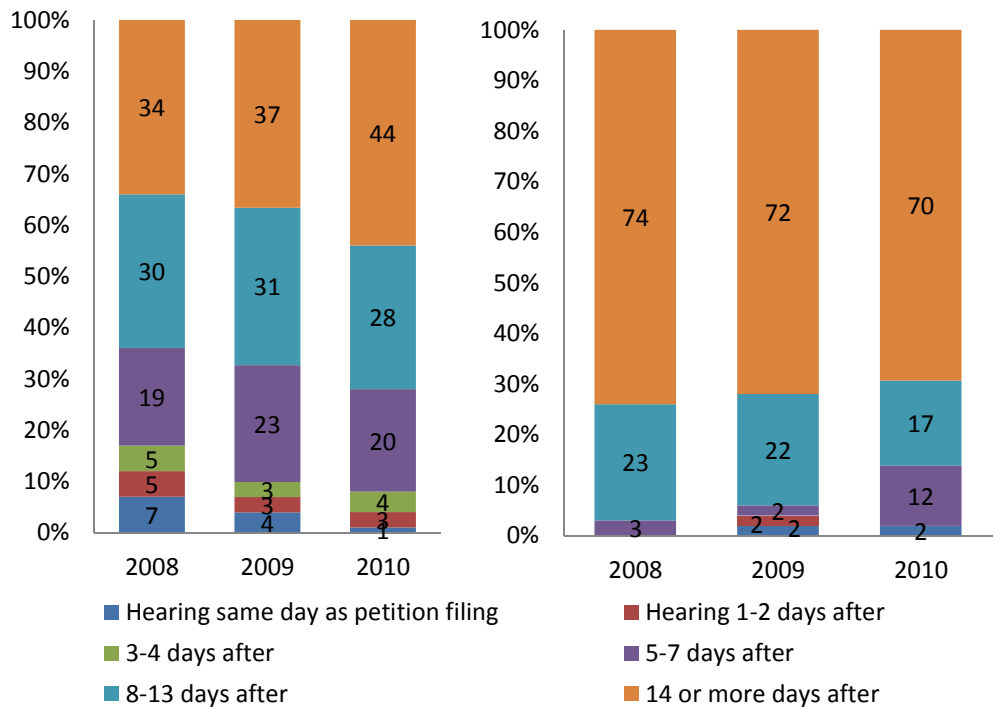
Petition to First Appearance

Nebraska

2008 Median = 9 days
 2009 Median = 10 days
 2010 Median = 12 days

District 9 Team GI

2008 Median = 19 days
 2009 Median = 17 days
 2010 Median = 18 days



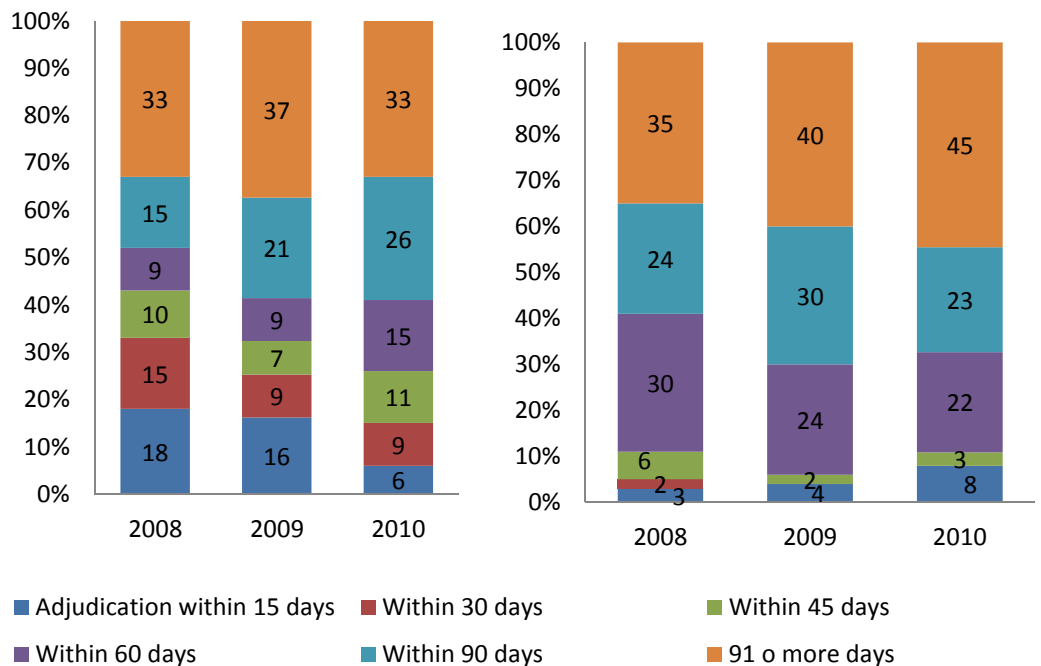
Petition to Adjudication

Nebraska

2008 Median = 57 days
 2009 Median = 72 days
 2010 Median = 73 days

District 9 Team GI

2008 Median = 77 days
 2009 Median = 78 days
 2010 Median = 82 days



Best practice recommendations

Petition to Protective Custody – petition prior to or same day

89% of 2010 District 9 GI cases had filed the petition the same day as protective custody order

Petition to adjudication – 60 days

33% of 2010 District 9 GI cases held the adjudication within 60 days of petition filing

Adjudication to disposition – 30 days

54% of 2010 District 9 GI cases held the disposition within 30 days of adjudication

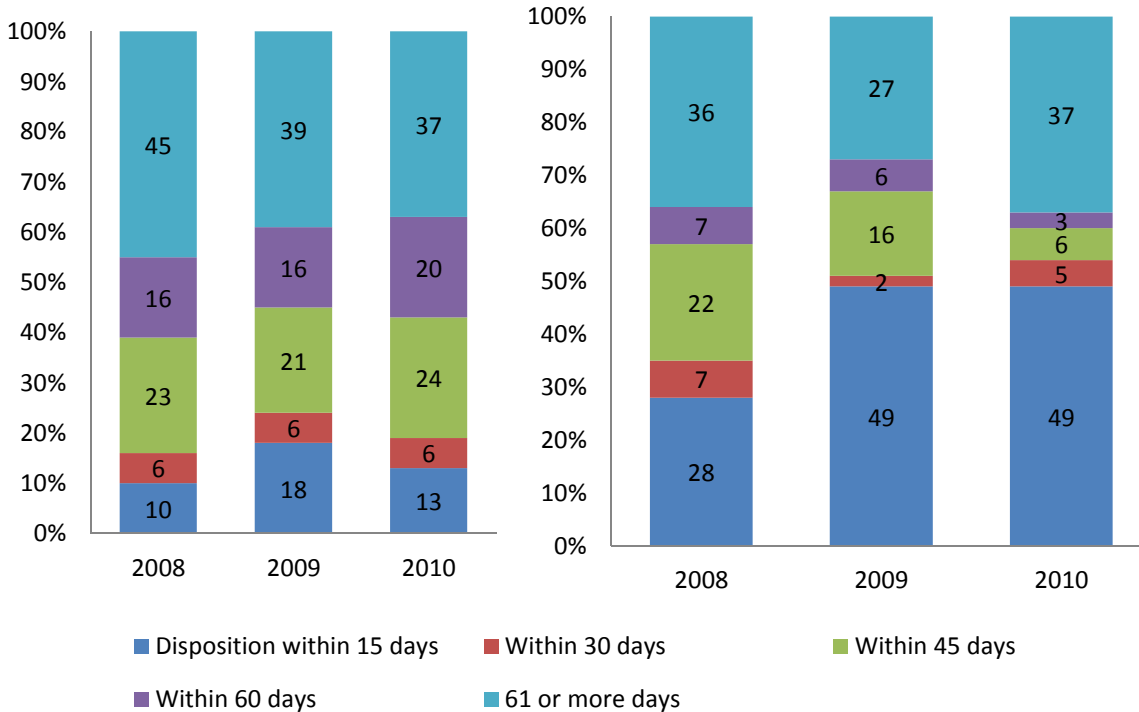
Adjudication to Disposition

Nebraska

2008 Median = 56 days
2009 Median = 49 days
2010 Median = 50 days

District 9 Team GI

2008 Median = 35 days
2009 Median = 24 days
2010 Median = 21 days



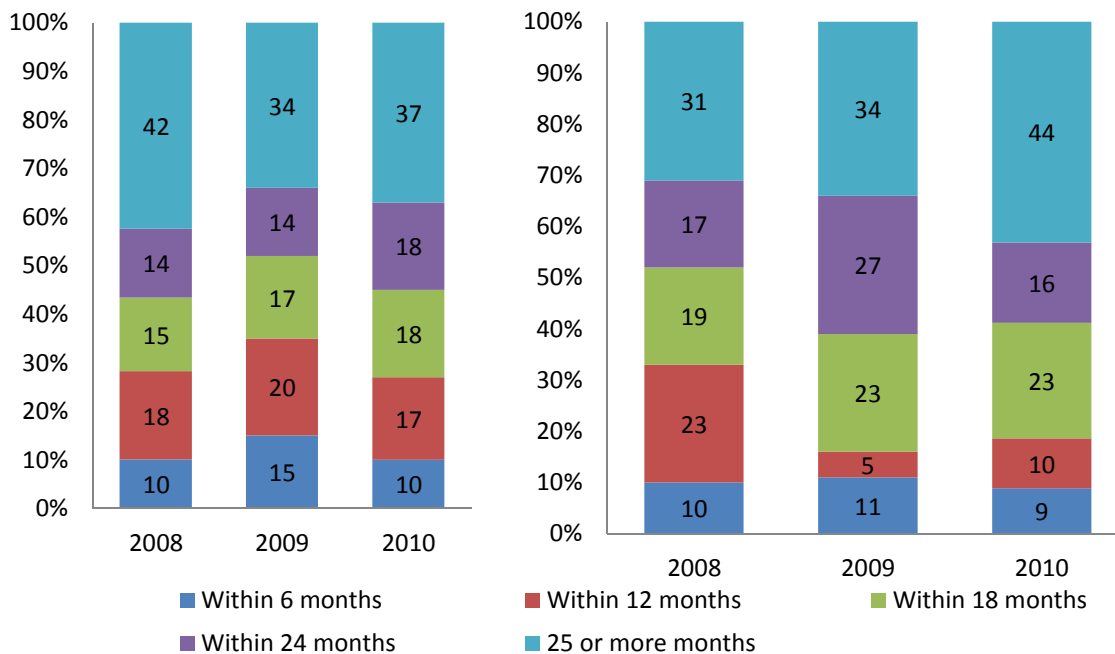
Petition to Case Closure

Nebraska

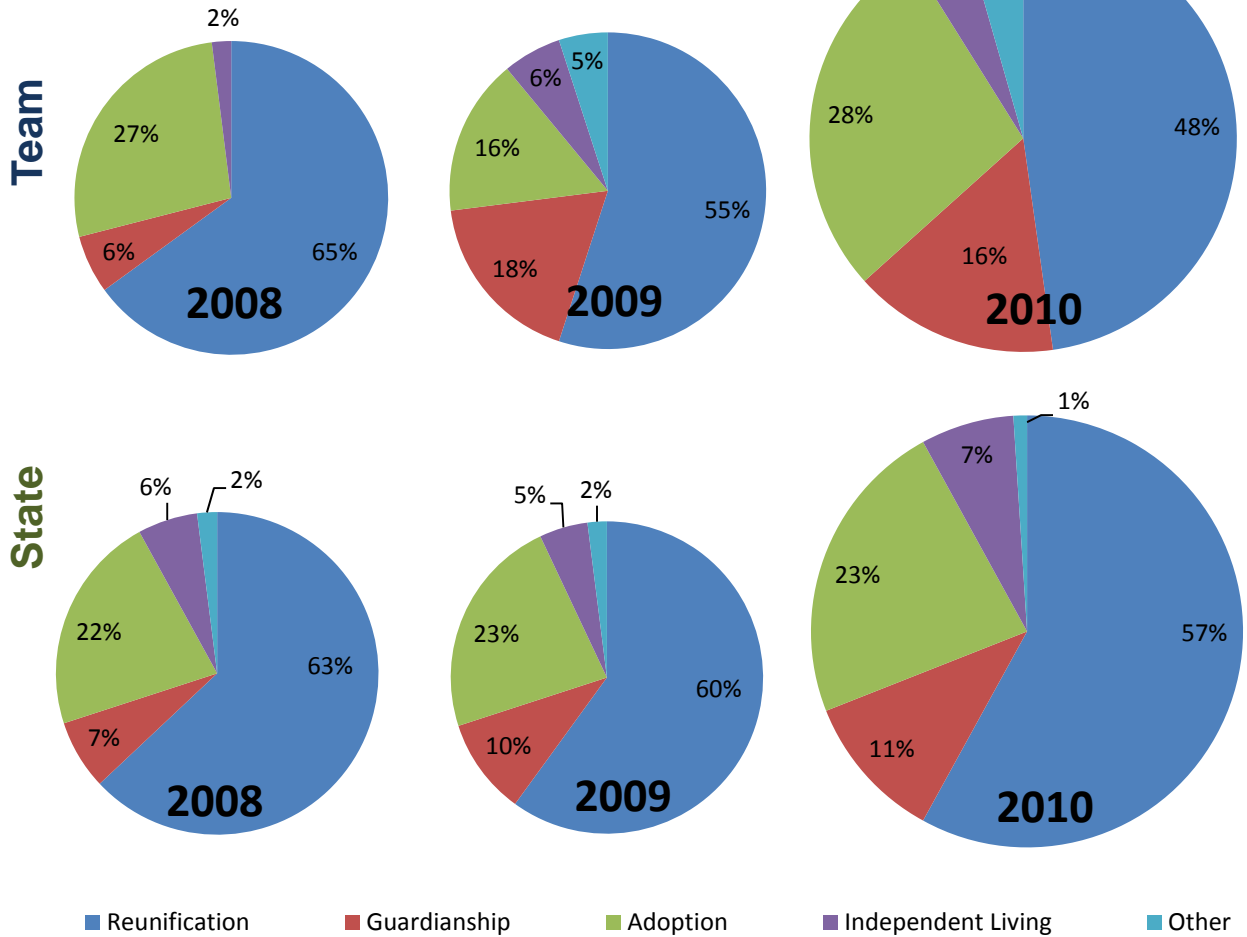
2008 Median = 23 months
2009 Median = 18 months
2010 Median = 19 months

District 9 Team GI

2008 Median = 17 months
2009 Median = 20 months
2010 Median = 20 months



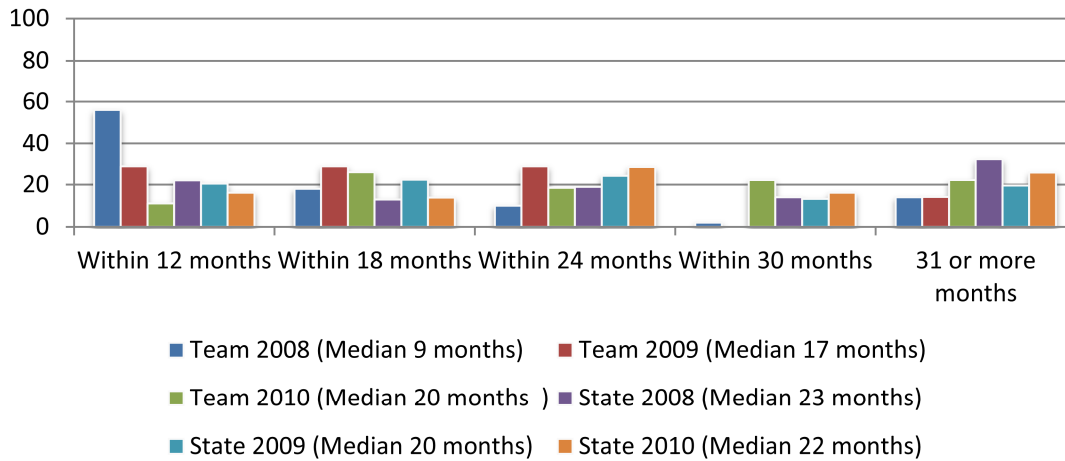
Type of Discharge



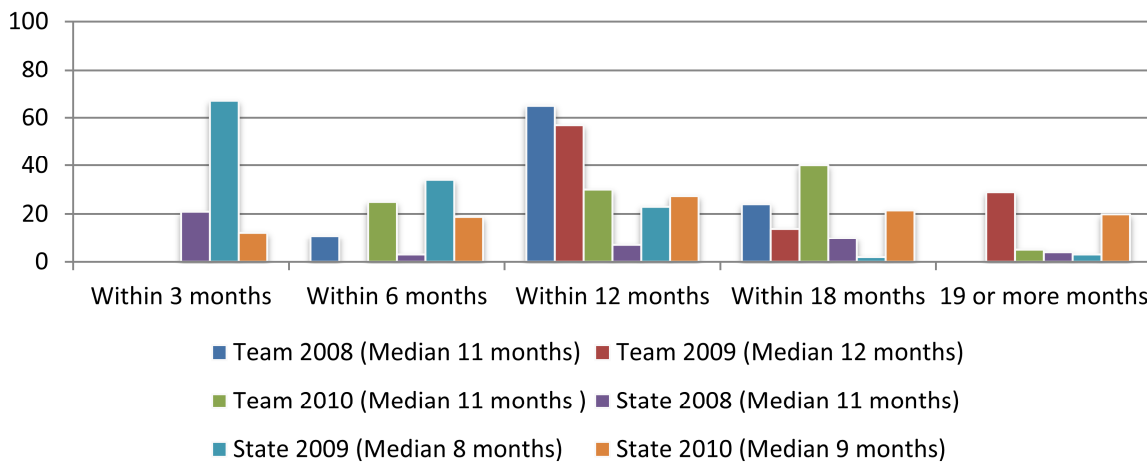
Case Progression for Zero to Three

Median Times	Team			State		
	2008	2009	2010	2008	2009	2010
Early Stages						
Petition to Ex-parte	2 days	1 day	0 days	1 day	1 day	0 days
Petition to Protective custody	2 days	1 day	0 days	1 day	0 days	0 days
Petition to First Appearance	18 days	16 days	18 days	9 days	10 days	13 days
Petition to Adjudication	86 days	71 days	91 days	62 days	70 days	70 days
Permanency Stages						
Adjudication to Disposition	36 days	24 days	32 days	58 days	49 days	50 days
Petition to Case Closure	19 months	21 months	22 months	21 months	19 months	20 months
TPR Stages						
Petition to TPR	10 months	17 months	19 months	23 months	19 months	21 months
TPR to Adoption	9 months	11 months	10 months	9 months	7 months	8 months

Petition to TPR - All Ages



TPR to Adoption - All Ages



Trends

The median time spent in foster care (length of stay) increased quite a bit in 2010 in Hall County. It is also concerning that virtually all teens are placed in group homes and that there is a high percentage of youth aging out of foster care, rather than having another permanency outcome. The team may want to explore whether more intensive permanency planning for older youth (e.g. utilizing family group conferencing) might result in more youth achieving permanency with ties to families that can provide support and assistance into adulthood.

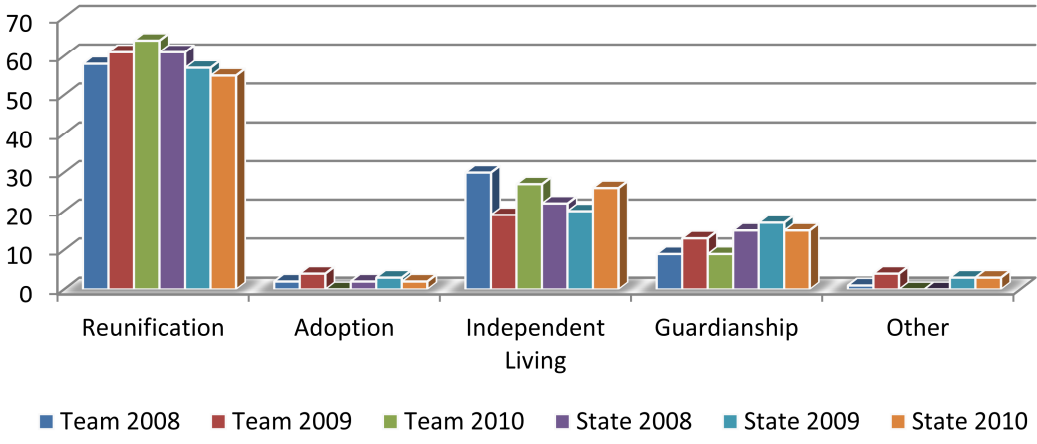
There is also concern for a high overall re-entry rate. The team may want to explore whether cases are closed prematurely or whether rehabilitative services for parents are effectively addressing the problems contributing to the maltreatment.





Adolescents Case Progression and Outcomes

Permanency Type for Youth 12 and Older (%)



Median Times	2008	Team 2009	2010	2008	State 2009	2010
Petition to Adjudication	94 days	89 days	67 days	53 days	79 days	72 days
Adjudication to Disposition	35 days	42 days	14 days	49 days	49 days	52 days
Average Number of Review Hearings	3	3	2	3	3	3
Petition to Case Closure	19 months	23 months	20 months	17 months	17 months	18 months
Petition to TPR	7 months	3 months	n/a	n/a	16 months	15 months
TPR to Case Closure	11 months	19 months	n/a	26 months	12 months	16 months