



Screening for **COVID-19**

Are you experiencing symptoms?

Symptoms may appear 2-14 days after exposure.



FEVER

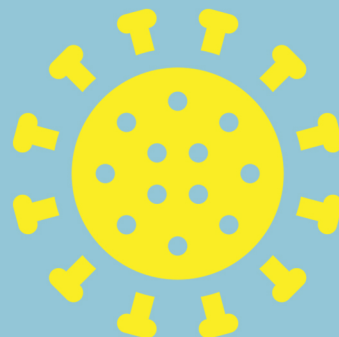


COUGH

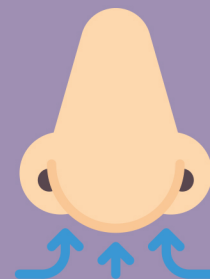


SHORTNESS OF BREATH

Have you been in contact with someone confirmed with or suspected to have COVID-19 in the last 14 days?



Have you recently lost your sense of taste or smell?



If you answered "yes" to any of the questions above, please stop and contact the phone number to the right to request accommodations.



CONTACT: